



Lyons Township High School District 204

Demographic Trends and Enrollment Projections

Prepared by

John D. Kasarda, Ph.D.
Consulting Demographer

August 13, 2022

Contents

Preface.....	1
Housing and Demographic Trends.....	3
Enrollment Trends and Student Migration in the K-8 Feeder School Districts...17	
Determinants of Enrollment Change.....	18
Enrollment Patterns in Lyons Township High School.....	29
Future Enrollment at Lyons Township High School.....	35
Concluding Remarks.....	40
Appendix A: Housing Stock by Year Built.....	46
Appendix B: Enrollment History and Analysis of Elementary Feeder Districts...50	

Preface

This report updates my December 2019 report on population and housing trends in the villages and K-8 public school districts that send students to Lyons Township High School District 204. The public sending school districts include District 101, District 102, District 103 (part), District 105, District 106, and District 107.

As before, the report commences with a review and update of housing development and demographic dynamics for the study area as a whole. I then examine the effects of these dynamics on enrollment changes in the pertinent K-8 sending school districts and analyze student migration/transfer patterns and other determinants of observed enrollment changes. Next, I project future eighth-grade enrollments at the sending school districts, by year and by grade, through school year 2035-36. Finally, I analyze recent student migration/retention and transfer data for Lyons Township High School District 204 and bring the K-8 district projections to bear on high school district enrollment projections through school year 2036-37.

Enrollment projections for Lyons Township High School (including North and South campuses) will be in the form of three separate series based on assumptions about local births, new residential development, turnover of existing housing (including teardowns and rebuilds), and resulting in-migration of families with preschool and school age children to the area served by District

204. These three series will provide by year and by high school grade through school year 2036-37 (A) the minimum number of students that may be anticipated, (B) the most likely number of students to be expected, and (C) the maximum number of students that can possibly be foreseen.

In conducting the analysis that follows, I benefited from enrollment statistics and housing development data provided by administrators of the K-8 sending districts and District 204. I would like especially to thank Dr. Brian Waterman, Superintendent of Lyons Township High School District 204, who coordinated data assembly. For his fine assistance and that of all others who contributed to this study, I am most appreciative.

Housing and Demographic Trends

The school district study areas cover approximately twenty-five square miles including unincorporated portions of Cook County and all or part of the following incorporated communities: Brookfield, Burr Ridge, Countryside, Hodgkins, Indian Head Park, LaGrange, LaGrange Park, Lyons, McCook, Stickney, Western Springs, and Willow Springs (see Figure 1).

Like many other of Chicago's more mature suburban areas, the territory served by Lyons Township High School District 204 experienced a flurry of new construction during the 1950s and early 1960s. (See Appendix A for American Community Survey estimates of the years that the current housing stock were built.) Most of these homes were larger, single-family detached structures. By today's standards, they were also modestly priced. For example, as late as 1970, the median house price was \$23,100 in Brookfield; \$31,000 in LaGrange Park; \$33,100 in LaGrange; and \$38,100 in Western Springs.

The rapid development of these affordable homes attracted substantial numbers of younger families with preschool and school-age children. Moreover, during this post-war baby boom era, most of these younger households contained at least two children. Thus, in 1960, my prior reports showed that children under age 18 represented at least one-third of the total population in each of the villages in the District 204 area.

The slowdown in new single-family housing construction that commenced in the latter half of the 1960s, together with the rapid price appreciation of existing single-family units since the early 1970s, slowed the heavy flow of younger couples with children to the area. These forces interacted with declining resident fertility rates to reduce dramatically the number of preschool and school-age children during the second half of the 1970s. The 1980–82 recession and sharp rise in mortgage interest rates brought new single-family housing construction in the area to a near standstill.

As can be observed in Table 1, single-family housing construction permits rebounded in a number of the villages after 1982, especially Burr Ridge. The national and local economic recovery in the mid-1980s, along with declining home mortgage interest rates, also facilitated turnover of existing homes and served to attract additional younger families to the area, as did an increasing number of teardowns and rebuilds in the late 1980s, 1990s, and early part of this century. These teardowns and rebuilds (which are included in the new housing permit data) often generated larger homes that attracted younger families with children. The Great Recession of 2008 to 2012 substantially depressed new housing construction. Between 2013 and 2021, there was a recovery in housing permits authorized annually in the villages, though the numbers (which include teardowns/rebuilds) were not nearly as much as the 1983 to 2007 period.

Births to residents of District 204 have been relatively stable since 2000. Table 2 presents the annual births to residents of ZIP Code areas of District 204 between 2000 and 2021. Figure 2 shows the area represented by each ZIP Code.

By far, the most important factor driving enrollment at Lyons Township High School and its sending districts is housing turnover. Relatively low mortgage interest rates from the late 1980s to the present kept housing turnover fairly robust in most area villages with the exception of the 2008–2012 recession. This contributed to total population growth between 1990 and 2000 in all villages, which generally slowed between 2000 and 2010 (see Table 3). Bureau of the Census counts from 2010 and 2020 show a small uptick in total village population growth with only two villages moderately or marginally declining.

The aging of Lyons Township village residents should impact housing turnover to younger families during the next ten to fifteen years. Table 4 presents estimates of the numbers of residents by preschool-age and school-age categories in 2020 for each District 204 village as well as estimates of the number of their residents over age 60, the latter of which has risen considerably during the past decade. Barring a prolonged recession or a continuation of rising mortgage interest rates, given the large numbers of residents who are 60+ in area villages, one should expect a solid amount of annual turnover of District 204 housing from empty-nesters to younger families with school-age children during the coming ten to fifteen years.

While essentially built-out, a few villages may also see small amounts of new housing construction. Together with empty-nest housing turnover to younger families with children, this should add to the population base of local villages. Table 5 provides the total population forecasts for District 204 villages by the Chicago Metropolitan Agency for Planning (CMAP) for the years 2030, 2040, and 2050, suggesting modestly expanding village population bases.

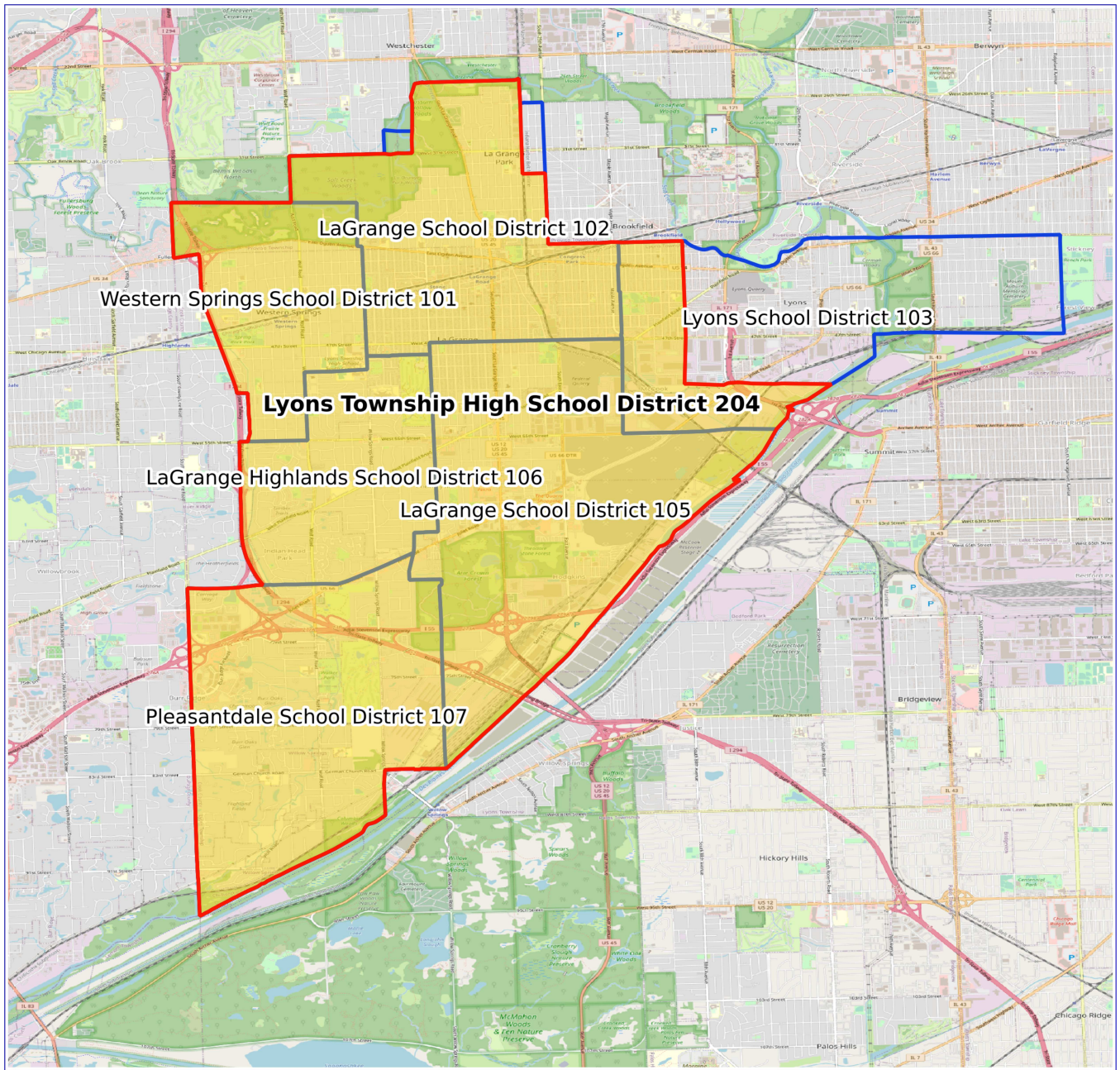


Figure 1. Boundaries of Lyons Township High School District 204 and Sending K–8 Public School Districts

Table 1

New Single-Family Housing Construction Permits Issued by Municipalities in the District 204 Area: 1982 to 2022

Municipality	1982	1983	1984	1985	1986	1987	1988	1989
Brookfield	1	6	3	10	31	14	na	4
Burr Ridge	40	134	134	115	126	138	252	100
Countryside	1	3	5	3	3	23	28	7
Forest View	–	1	1	2	–	1	1	3
Hinsdale	12	28	43	73	33	42	76	78
Hodgkins	1	–	–	–	3	2	1	1
Indian Head Park	2	16	12	20	4	2	4	2
La Grange	2	6	35	12	10	9	6	6
La Grange Park	2	2	3	4	8	5	6	6
Lyons	–	2	1	3	14	4	8	6
McCook	1	–	1	–	–	na	2	na
Stickney	–	na	na	na	1	na	na	na
Western Springs	4	na	na	na	7	3	10	5
Willow Springs	6	na	na	24	74	41	43	17
Total	72	198	238	266	314	284	437	235

Continued. . .

Table 1—Continued

New Single-Family Housing Construction Permits Issued by Municipalities in the District 204 Area: 1982 to 2022

Municipality	1990	1991	1992	1993	1994	1995	1996	1997	1998	1999
Brookfield	3	6	2	3	–	7	4	3	7	5
Burr Ridge	31	62	84	95	150	100	89	152	121	123
Countryside	10	11	3	2	5	1	7	18	19	26
Forest View	3	–	2	–	1	0	0	0	0	0
Hinsdale	70	31	60	72	103	88	59	73	118	113
Hodgkins	1	–	3	na	–	2	1	4	1	1
Indian Head Park	6	2	–	57	–	1	73	78	19	53
La Grange	3	4	10	12	10	9	29	9	5	10
La Grange Park	–	1	2	1	3	0	3	0	0	0
Lyons	10	5	2	3	8	2	3	2	3	2
McCook	na	–	–	na	2	2	1	0	1	1
Stickney	na	na	na	na	17	4	10	4	2	9
Western Springs	5	6	14	46	18	13	14	12	41	62
Willow Springs	12	11	13	39	47	5	21	22	14	16
Total	154	139	195	330	364	234	314	377	351	421

Continued . . .

Table 1—Continued

New Single-Family Housing Construction Permits Issued by Municipalities in the District 204 Area: 1982 to 2022

Municipality	2000	2001	2002	2003	2004	2005	2006	2007	2008	2009
Brookfield	3	2	3	6	4	5	47	18	0	0
Burr Ridge	62	53	54	40	41	36	28	30	11	4
Countryside	10	4	7	8	10	12	10	12	5	5
Forest View	0	0	0	0	0	0	0	0	0	0
Hinsdale	95	105	107	90	109	116	80	43	21	18
Hodgkins	1	1	2	4	2	1	4	0	1	0
Indian Head Park	5	51	2	4	1	1	8	0	1	0
La Grange	7	31	23	36	44	39	23	27	14	15
La Grange Park	2	13	3	7	9	9	9	5	5	6
Lyons	3	2	4	1	3	3	2	0	1	1
McCook	0	0	0	0	0	0	0	0	0	0
Stickney	1	4	3	2	4	8	3	5	0	1
Western Springs	38	42	38	80	45	54	70	64	17	11
Willow Springs	143	124	55	16	23	7	4	2	1	1
Total	370	432	301	294	295	291	288	206	77	62

Continued . . .

Table 1—Continued

New Single-Family Housing Construction Permits Issued by Municipalities in the District 204 Area: 1982 to 2022

Municipality	2010	2011	2012	2013	2014	2015	2016	2017	2018	2019	2020	2021	-5/22
Brookfield	0	0	0	3	1	4	6	5	0	0	2	0	0
Burr Ridge	12	7	9	12	28	27	30	25	40	32	37	14	4
Countryside	3	2	3	6	5	9	6	25	15	2	2	3	1
Forest View	0	0	0	0	0	0	0	0	0	0	0	0	0
Hinsdale	33	35	39	55	67	56	31	27	48	40	32	49	19
Hodgkins	0	0	0	0	0	0	0	1	36	3	0	0	0
Indian Head Park	0	0	0	1	0	2	1	0	0	1	0	3	2
La Grange	14	14	19	20	19	19	7	12	12	13	15	31	10
La Grange Park	2	2	2	10	4	4	3	4	4	3	4	5	0
Lyons	0	0	1	1	1	2	3	1	2	2	2	0	0
McCook	0	0	0	0	0	0	0	0	0	0	0	0	0
Stickney	1	1	0	0	1	2	2	0	5	5	5	4	2
Western Springs	14	13	21	46	54	67	44	28	26	31	20	41	10
Willow Springs	0	1	0	2	4	2	6	2	0	3	3	3	1
Total	79	75	94	156	184	194	139	130	188	135	122	153	49

Source: U.S. Bureau of the Census. Current Construction Reports. "Housing Units Authorized by Permits." Annual Reports 1982–2021 and May 2022 year to date.

Table 2

Registered Births to Residents of ZIP Codes in the District 204 Area: 2000 to 2021

Year	ZIP Code						Sum
	60480	60513	60525	60526	60527	60558	
2000	49	250	452	155	0	158	1,064
2001	41	221	409	151	51	149	1,022
2002	64	251	403	156	190	189	1,253
2003	52	258	396	179	230	138	1,253
2004	67	244	368	157	239	150	1,225
2005	65	220	350	151	271	141	1,198
2006	59	252	329	139	220	148	1,147
2007	66	243	343	149	235	114	1,150
2008	47	242	302	149	217	104	1,061
2009	56	221	301	128	252	116	1,074
2010	66	256	349	147	251	100	1,169
2011	62	233	271	121	276	99	1,062
2012	53	194	295	140	289	88	1,059
2013	53	263	304	119	294	109	1,142
2014	42	235	294	141	282	131	1,125
2015	50	240	301	141	294	121	1,147
2016	50	208	289	132	274	107	1,060
2017	40	231	311	164	278	133	1,157
2018	37	207	288	115	273	126	1,046
2019	42	219	302	123	269	124	1,079
2020	42	236	304	115	227	136	1,060
2021	34	212	340	115	248	134	1,083

Source: Illinois Department of Public Health. 2021 are preliminary estimates.

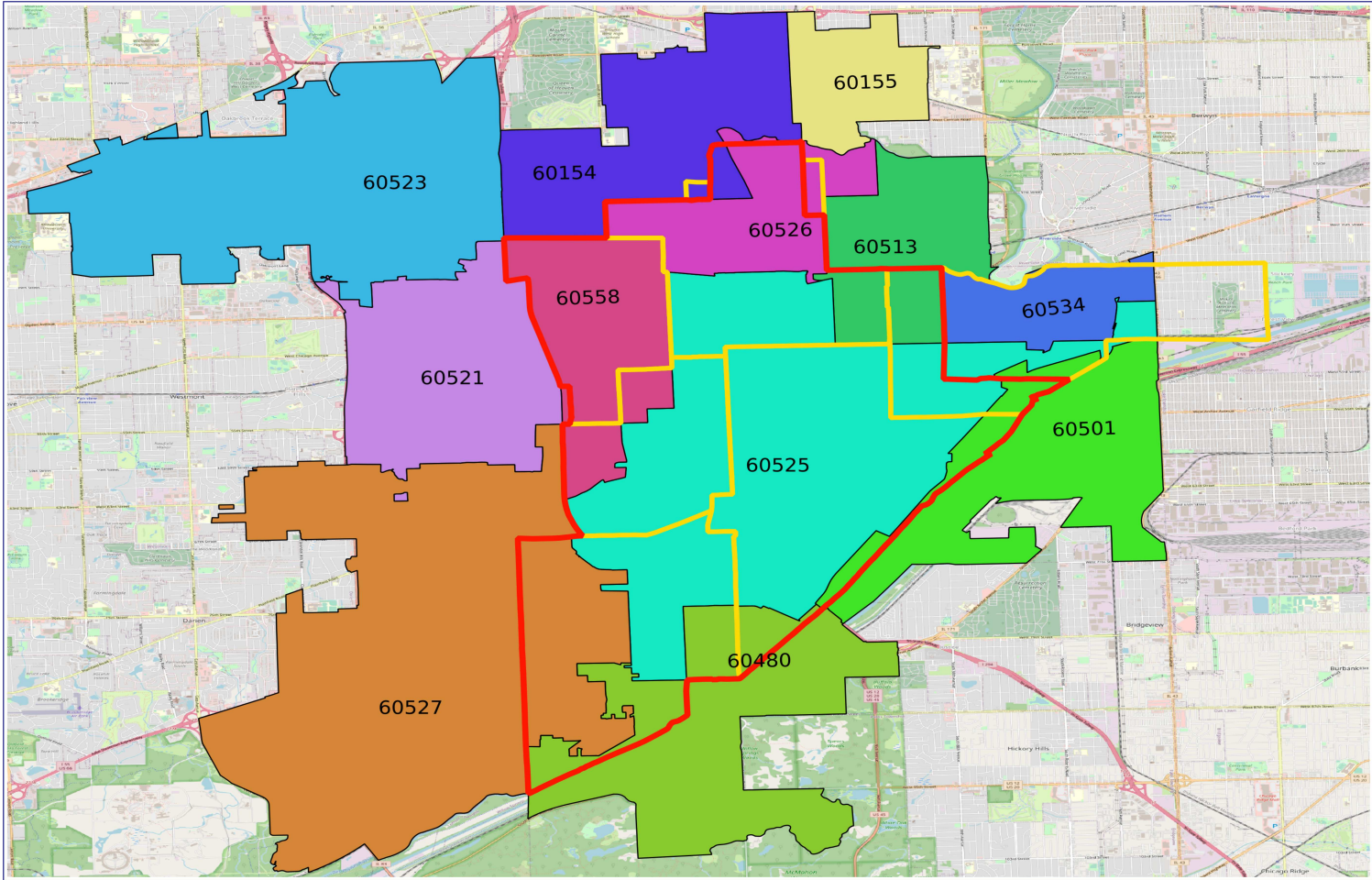


Figure 2. ZIP Codes in the Lyons Township High School District 204 Area

Table 3

Population of Municipalities in the District 204 Area: 1980 to 2020

Municipality	1980	1990	2000	2010	2020	2000–10		2010–20	
						Change	Percent	Change	Percent
Brookfield	19,395	18,876	19,085	18,978	19,476	-107	-0.6	498	2.6
Burr Ridge	3,833	7,669	10,408	10,559	11,192	151	1.5	633	6
Countryside	6,538	5,716	5,991	5,895	6,420	-96	-1.6	525	8.9
Forest View	764	743	778	698	792	-80	-10.3	94	13.5
Hinsdale	16,726	16,029	17,349	16,816	17,395	-533	-3.1	579	3.4
Hodgkins	2,005	1,963	2,134	1,897	1,500	-237	-11.1	-397	-20.9
Indian Head Park	2,915	3,503	3,685	3,809	4,065	124	3.4	256	6.7
La Grange	15,445	15,362	15,608	15,550	16,321	-58	-0.4	771	5
La Grange Park	13,359	12,861	13,295	13,579	13,475	284	2.1	-104	-0.8
Lyons	9,925	9,828	10,255	10,729	10,817	474	4.6	88	0.8
McCook	303	235	254	228	249	-26	-10.2	21	9.2
Stickney	5,893	5,678	6,148	6,786	7,110	638	10.4	324	4.8
Western Springs	12,876	11,984	12,493	12,975	13,629	482	3.9	654	5
Willow Springs	4,147	4,509	5,027	5,524	5,857	497	9.9	333	6
Total	114,124	114,956	122,510	124,023	128,298	1,513	1.2	4275	3.4

Source: U.S. Bureau of the Census. Decennial Census of Population and Housing 1980, 1990, 2000, 2010, 2020.

Table 4

Estimated Population by Age in Municipalities in the District 204 Area: 2020

Population by Age						
Municipality	Age Group					
	Total	Under 5	5 to 9	10 to 14	15 to 19	60 and over
Brookfield	19,476	1,472	1,533	1,315	1,249	3,885
Burr Ridge	11,192	441	770	687	505	4,510
Countryside	6,420	282	196	578	461	1,459
Forest View	792	97	86	56	17	200
Hinsdale	17,395	964	1,525	1,777	1,655	3,316
Hodgkins	1,500	50	122	181	74	436
Indian Head Park	4,065	243	160	193	100	1,852
La Grange	16,321	1,028	1,103	1,716	1,315	3,737
La Grange Park	13,475	974	910	1,035	968	3,191
Lyons	10,817	899	1,043	517	460	2,116
McCook	249	20	20	17	5	61
Stickney	7,110	361	621	436	531	1,314
Western Springs	13,629	1,206	1,161	1,133	970	2,862
Willow Springs	5,857	224	279	453	331	1,793
Total	128,298	8,261	9,529	10,094	8,641	30,732
Percent Population by Age						
Municipality	Age Group					
	Total	Under 5	5 to 9	10 to 14	15 to 19	60 and over
Brookfield	100.0	7.6	7.9	6.8	6.4	19.9
Burr Ridge	100.0	3.9	6.9	6.1	4.5	40.3
Countryside	100.0	4.4	3.1	9.0	7.2	22.7
Forest View	100.0	12.2	10.9	7.1	2.1	25.3
Hinsdale	100.0	5.5	8.8	10.2	9.5	19.1
Hodgkins	100.0	3.3	8.1	12.1	4.9	29.1
Indian Head Park	100.0	6.0	3.9	4.7	2.5	45.6
La Grange	100.0	6.3	6.8	10.5	8.1	22.9
La Grange Park	100.0	7.2	6.8	7.7	7.2	23.7
Lyons	100.0	8.3	9.6	4.8	4.3	19.6
McCook	100.0	8.0	8.0	6.8	2.0	24.5
Stickney	100.0	5.1	8.7	6.1	7.5	18.5
Western Springs	100.0	8.8	8.5	8.3	7.1	21.0
Willow Springs	100.0	3.8	4.8	7.7	5.7	30.6
Total	100.0	6.4	7.4	7.9	6.7	24.0

Source: *U.S. Bureau of the Census, Decennial Census, 2020; and American Community Survey 5-Year Estimates, 2020.

Table 5

Projected Population in Municipalities in the District 204 Area: 2020, 2030, 2040 and 2050

Municipality	2020*	2030	2040	2050
Brookfield	19,476	19,548	20,749	21,531
Burr Ridge	11,192	11,922	13,166	14,321
Countryside	6,420	6,920	7,561	8,150
Forest View	792	923	1,213	1,255
Hinsdale	17,395	18,564	19,485	19,838
Hodgkins	1,500	2,325	2,725	3,094
Indian Head Park	4,065	4,074	4,225	4,332
La Grange	16,321	16,635	17,570	17,958
La Grange Park	13,475	13,755	14,288	14,664
Lyons	10,817	11,322	12,103	12,486
McCook	249	329	426	467
Stickney	7,110	7,190	7,763	7,920
Western Springs	13,629	14,322	14,821	14,941
Willow Springs	5,857	6,055	6,479	6,845
Total	128,298	133,884	142,574	147,802

Source: *U.S. Bureau of the Census. Decennial Census, 2020.
Chicago Metropolitan Agency for Planning. ON TO 2050 Forecast of Population, Households and Employment. October 10, 2018.

Enrollment Trends and Student Migration in the K-8 Feeder School Districts

Overall enrollment trends in the K-8 school districts that feed students to Lyons Township High School mirrored fertility patterns, new housing development (including teardowns/rebuilds), housing turnover, and younger family migration to the area. The total number of students in local school districts mushroomed during the 1950s and 1960s. Combined K-8 district enrollments peaked at 11,432 students in school year 1969-70 (see Table 6). Thereafter, total enrollment declined every year for the next fifteen years, bottoming out at 5,980 in 1984-85. After 1984-85, combined K-8 feeder district enrollments rebounded, rising for over a quarter century, reaching a total of 9,624 in 2010-11. Since 2010-11, combined feeder district K-8 total enrollment has fluctuated, but trended downward in the past six years with the 2021-22 total showing at 9,271 students, down from 9,708 students in 2016-17.

Table 6 reveals that a major harbinger of elementary district enrollment change, kindergarten enrollment, peaked at 1,494 students in 1965-66. It then declined to just 646 students in 1983-84, before rising above 800 in the 1990s and above 900 for most of this century, peaking again at 1,053 students in school year 2012-13, the largest in over 40 years. Since 2013, with the exception of two years (2013-14 and 2016-17), combined elementary feeder district kindergarten

enrollment has been in the 900s, with 920 kindergarten students registered in fall 2021.

Total kindergarten through fifth-grade enrollment, which peaked at 7,658 students in 1969–70, dropped during the ensuing fifteen years by more than half to 3,732 students in 1983–84. More than twenty-five years of consecutive total K–5 growth occurred thereafter with aggregate feeder district K–5 enrollment bouncing back to 6,442 students in 2010–11. Following six years of relative stability near that number, aggregate K–5 feeder-districts enrollment steadily declined from 6,365 in 2016–17 to 6,015 students in school year 2021–22.

Aggregated elementary feeder district grades 6–8 enrollment fell from its peak of 3,893 students in 1970–71 to 1,957 students in 1986–87. It then steadily climbed back to 3,390 grades 6–8 students in 2014–15 before inconsistently rose to 3,256 students last year (2021–22). Combining the K–5 and 6–8 enrollments reveals that total K–8 enrollment in the feeder districts dropped by 437 students between 2016–17 and 2021–22. These recent years enrollment declines in the feeder districts will filter up to Lyons Township High School likely depressing its enrollment in the short-term.

Determinants of Enrollment Change

Elementary school districts are open demographic systems whose growth, stability, or decline is affected by three basic factors. The first is the difference between the size of the district's exiting (graduating) eighth grade class each June

and the size of the kindergarten class that replaces it the following September. The second is the net migration/transfer of school-age children as they progress through the grades over the years. The third is annual change in special education enrollment when it was reported separately from the regular grades (September 1985 to September 2010).

Tables 7, 8, and 9 show how the annual total enrollment change in the combined K-8 districts can be decomposed into the three components through September 2021. Table 7 provides the grade-by-grade and year-by-year enrollment for the combined K-8 districts since school year 1985-86. Table 8 decomposes the annual enrollment changes between September 1985 and September 2010 into the three basic components, and afterward (through 2021-22) into two components. Thus, between September 2020 (school year 2020-21) and September 2021 (school year 2021-22), total combined elementary feeder school district enrollment declined by 177 students (9,448 to 9,271). The 1,138 eighth graders who left the K-8 districts in June 2021 (see Table 7) were replaced last September by 920 kindergarten students, for a net entering versus exiting class size loss of 218. Partially countering this were 41 more K through 8th grade students who either migrated into the six public elementary school districts or transferred from private or parochial schools than migrated out of the districts or transferred to private or parochial schools between September 2020 and September 2021. Combining the two components (-218 and +41) gives

–177, which is the change in the aggregated six feeder elementary school districts' enrollment between September 2020 and September 2021.

Table 9 describes how the net student migration/transfer figures are computed from enrollment data. The bottom left-hand cell of “51” means that as the kindergarten class of September 2020 progressed to the first grade in September 2021, it gained fifty-one students (see Table 7, where kindergarten enrollment in school year 2020–21 was 979 students and first grade enrollment in school year 2021–22 was 1,030 students). Summing across the grade transitions provides the net student migration/transfer figure of “41” shown in Table 8. Note that the aggregated six elementary feeder districts experienced positive net student migration/transfer every year from 1984–85 to 2021–22.

Appendix B provides the annual enrollments between school years 1985–86 and 2021–22 for each elementary feeder district to Lyons Township High School. It also provides the decomposition of annual sources of enrollment change for each feeder district and its annual net student migration/transfer numbers. The tables in Appendix B should be interpreted in the same manner as tables 7, 8, and 9 just described.

Table 6

Enrollment Trends (Excluding Special Education) in the Combined K–8 Districts
Served by High School District 204: 1960–61 to 2021–22

School Year	K	1–5	Total K–5	6–8	Total K–8
1960–61	1,440	5,443	6,883	3,327	10,210
1962–63	1,419	5,592	7,011	3,270	10,281
1965–66	1,494	5,783	7,277	3,433	10,710
1967–68	1,369	6,216	7,585	3,670	11,255
1969–70	1,328	6,330	7,658	3,774	11,432
1970–71	1,215	6,061	7,276	3,893	11,169
1972–73	1,027	5,523	6,550	3,679	10,229
1975–76	1,045	4,722	5,767	3,320	9,087
1977–78	757	4,317	5,074	2,987	8,061
1979–80	669	3,800	4,469	2,617	7,086
1980–81	670	3,567	4,237	2,510	6,747
1981–82	653	3,310	3,963	2,502	6,465
1982–83	656	3,161	3,817	2,475	6,292
1983–84	646	3,086	3,732	2,300	6,032
1984–85	700	3,086	3,786	2,122	5,908
1985–86	729	3,218	3,947	2,015	5,962
1986–87	685	3,338	4,023	1,957	5,980
1987–88	709	3,397	4,106	1,978	6,084
1988–89	745	3,494	4,239	1,964	6,203
1989–90	759	3,604	4,363	2,017	6,380

Continued. . .

Table 6—Continued

Enrollment Trends (Excluding Special Education) in the Combined K–8 Districts Served by High School District 204: 1960–61 to 2021–22

School Year	K	1–5	Total K–5	6–8	Total K–8
1990–91	767	3,678	4,445	2,122	6,567
1991–92	834	3,804	4,638	2,207	6,845
1992–93	820	4,005	4,825	2,296	7,121
1993–94	864	4,093	4,957	2,345	7,302
1994–95	890	4,330	5,220	2,321	7,541
1995–96	840	4,407	5,247	2,398	7,645
1996–97	893	4,492	5,385	2,492	7,877
1997–98	910	4,551	5,461	2,609	8,070
1998–99	861	4,677	5,538	2,663	8,201
1999–00	869	4,720	5,589	2,749	8,338
2000–01	892	4,720	5,612	2,822	8,434
2001–02	927	4,830	5,757	2,903	8,660
2002–03	924	4,834	5,758	2,940	8,698
2003–04	866	4,908	5,774	2,999	8,773
2004–05	949	4,944	5,893	3,069	8,962
2005–06	953	5,020	5,973	3,009	8,982
2006–07	1,016	5,089	6,105	3,008	9,113
2007–08	979	5,249	6,228	3,072	9,300
2008–09	990	5,300	6,290	3,139	9,429
2009–10	1,034	5,381	6,415	3,138	9,553
2010–11	984	5,458	6,442	3,182	9,624
2011–12	920	5,440	6,360	3,253	9,613
2012–13	1,053	5,362	6,415	3,371	9,786
2013–14	1,031	5,388	6,419	3,396	9,815
2014–15	951	5,459	6,410	3,390	9,800
2015–16	964	5,350	6,314	3,340	9,654
2016–17	1,011	5,354	6,365	3,343	9,708
2017–18	953	5,309	6,262	3,356	9,618
2018–19	956	5,222	6,178	3,299	9,477
2019–20	996	5,174	6,170	3,377	9,547
2020–21	979	5,071	6,050	3,398	9,448
2021–22	920	5,095	6,015	3,256	9,271

Note: Special education students mainstreamed into their respective grade counts since 2010.

Table 7

Enrollment Trends by Grade in the Combined K–8 Districts Served by High School District 204: 1985–86 to 2021–22

School Year	K	1	2	3	4	5	6	7	8	K–8	Sp. Ed.	Total
1985–86	729	717	654	614	636	597	638	656	721	5,962	237	6,199
1986–87	685	721	697	648	619	653	627	667	663	5,980	265	6,245
1987–88	709	708	709	711	641	628	655	646	677	6,084	336	6,420
1988–89	745	737	673	735	696	653	648	666	650	6,203	326	6,529
1989–90	759	733	726	689	752	704	672	671	674	6,380	278	6,658
1990–91	767	777	725	723	696	757	716	716	690	6,567	322	6,889
1991–92	834	791	790	759	756	708	763	734	710	6,845	303	7,148
1992–93	820	875	811	810	743	766	742	802	752	7,121	288	7,409
1993–94	864	859	873	816	807	738	773	762	810	7,302	288	7,590
1994–95	890	898	860	892	860	820	752	796	773	7,541	218	7,759
1995–96	840	938	885	859	875	850	839	761	798	7,645	223	7,868
1996–97	893	932	936	885	879	860	879	854	759	7,877	133	8,010
1997–98	910	931	926	917	917	860	867	884	858	8,070	109	8,179
1998–99	861	966	910	940	932	929	885	882	896	8,201	117	8,318
1999–00	869	917	972	948	954	929	946	903	900	8,338	136	8,474

Continued. . .

Table 7—Continued

Enrollment Trends by Grade in the Combined K–8 Districts Served by High School District 204: 1985–86 to 2021–22

School Year	K	1	2	3	4	5	6	7	8	K–8	Sp. Ed.	Total
2000–01	892	918	914	983	951	954	945	967	910	8,434	131	8,565
2001–02	927	973	947	937	989	984	984	945	974	8,660	124	8,784
2002–03	924	990	966	924	952	1,002	996	981	963	8,698	127	8,825
2003–04	866	986	997	983	951	991	1,024	1,006	969	8,773	104	8,877
2004–05	949	954	985	1,015	1,025	965	999	1,055	1,015	8,962	110	9,072
2005–06	953	1,002	958	1,029	1,018	1,013	981	1,003	1,025	8,982	99	9,081
2006–07	1,016	1,037	1,034	970	1,031	1,017	1,015	1,007	986	9,113	67	9,180
2007–08	979	1,106	1,054	1,044	992	1,053	1,028	1,034	1,010	9,300	66	9,366
2008–09	990	1,060	1,096	1,072	1,055	1,017	1,058	1,035	1,046	9,429	120	9,549
2009–10	1,034	1,043	1,057	1,125	1,088	1,068	1,029	1,074	1,035	9,553	140	9,693
2010–11	984	1,072	1,063	1,083	1,142	1,098	1,073	1,045	1,064	9,624	0	9,624
2011–12	920	1,030	1,074	1,080	1,106	1,150	1,096	1,101	1,056	9,613	0	9,613
2012–13	1,053	1,001	1,063	1,084	1,097	1,117	1,164	1,118	1,089	9,786	0	9,786
2013–14	1,031	1,112	1,006	1,059	1,104	1,107	1,095	1,176	1,125	9,815	0	9,815
2014–15	951	1,104	1,124	1,046	1,067	1,118	1,104	1,113	1,173	9,800	0	9,800
2015–16	964	1,004	1,096	1,123	1,053	1,074	1,122	1,102	1,116	9,654	0	9,654
2016–17	1,011	1,003	1,017	1,119	1,131	1,084	1,087	1,138	1,118	9,708	0	9,708
2017–18	953	1,028	993	1,036	1,120	1,132	1,088	1,109	1,159	9,618	0	9,618
2018–19	956	982	1,060	1,000	1,068	1,112	1,120	1,090	1,089	9,477	0	9,477
2019–20	996	988	991	1,098	1,002	1,095	1,132	1,139	1,106	9,547	0	9,547
2020–21	979	996	988	991	1,081	1,015	1,100	1,160	1,138	9,448	0	9,448
2021–22	920	1,030	1,006	1,000	978	1,081	1,024	1,099	1,133	9,271	0	9,271

Note: Special education students mainstreamed into their respective grade counts since 2010.

Table 8

Decomposition of Annual Enrollment Change in Combined K–8 Districts Served by High School District 204: September 1985 to September 2021

Transition Year Sept. to Sept.	Change Total Enrollment	Entering K vs. Exiting 8	Net Student Migration/ Transfer	Change Sp. Ed.
1985 to 86	46	-36	54	28
1986 to 87	175	46	58	71
1987 to 88	109	68	51	-10
1988 to 89	129	109	68	-48
1989 to 90	231	93	94	44
1990 to 91	259	144	134	-19
1991 to 92	261	110	166	-15
1992 to 93	181	112	69	0
1993 to 94	169	80	159	-70
1994 to 95	109	67	37	5
1995 to 96	142	95	137	-90
1996 to 97	169	151	42	-24
1997 to 98	139	3	128	8
1998 to 99	156	-27	164	19
1999 to 00	91	-8	104	-5

Continued. . .

Table 8—Continued

Decomposition of Annual Enrollment Change in Combined K–8 Districts Served by High School District 204: September 1985 to September 2021

Transition Year Sept. to Sept.	Change Total Enrollment	Entering K vs Exiting 8	Net Student Migration/ Transfer	Change Sp. Ed.
2000 to 01	219	17	209	-7
2001 to 02	41	-50	88	3
2002 to 03	52	-97	172	-23
2003 to 04	195	-20	209	6
2004 to 05	9	-62	82	-11
2005 to 06	99	-9	140	-32
2006 to 07	186	-7	194	-1
2007 to 08	183	-20	149	54
2008 to 09	144	-12	136	20
2009 to 10	-69	-51	122	-140
2010 to 11	-11	-144	133	0
2011 to 12	173	-3	176	0
2012 to 13	29	-58	87	0
2013 to 14	-15	-174	159	0
2014 to 15	-146	-209	63	0
2015 to 16	54	-105	159	0
2016 to 17	-90	-165	75	0
2017 to 18	-141	-203	62	0
2018 to 19	70	-93	163	0
2019 to 20	-99	-127	28	0
2020 to 21	-177	-218	41	0

Table 9

Annual Net Student Migration/Transfer in Combined K–8 Districts
Served by High School District 204: September 1985 to September 2021

Transition Year Sept. to Sept.	Grade Transition								Total
	K–1	1–2	2–3	3–4	4–5	5–6	6–7	7–8	
1985 to 86	-8	-20	-6	5	17	30	29	7	54
1986 to 87	23	-12	14	-7	9	2	19	10	58
1987 to 88	28	-35	26	-15	12	20	11	4	51
1988 to 89	-12	-11	16	17	8	19	23	8	68
1989 to 90	18	-8	-3	7	5	12	44	19	94
1990 to 91	24	13	34	33	12	6	18	-6	134
1991 to 92	41	20	20	-16	10	34	39	18	166
1992 to 93	39	-2	5	-3	-5	7	20	8	69
1993 to 94	34	1	19	44	13	14	23	11	159
1994 to 95	48	-13	-1	-17	-10	19	9	2	37
1995 to 96	92	-2	0	20	-15	29	15	-2	137
1996 to 97	38	-6	-19	32	-19	7	5	4	42
1997 to 98	56	-21	14	15	12	25	15	12	128
1998 to 99	56	6	38	14	-3	17	18	18	164
1999 to 00	49	-3	11	3	0	16	21	7	104

Continued. . .

Table 9—Continued

Annual Net Student Migration/Transfer in Combined K–8 Districts
Served by High School District 204: September 1985 to September 2021

Transition Year Sept. to Sept.	Grade Transition								Total
	K–1	1–2	2–3	3–4	4–5	5–6	6–7	7–8	
2000 to 01	81	29	23	6	33	30	0	7	209
2001 to 02	63	-7	-23	15	13	12	-3	18	88
2002 to 03	62	7	17	27	39	22	10	-12	172
2003 to 04	88	-1	18	42	14	8	31	9	209
2004 to 05	53	4	44	3	-12	16	4	-30	82
2005 to 06	84	32	12	2	-1	2	26	-17	140
2006 to 07	90	17	10	22	22	11	19	3	194
2007 to 08	81	-10	18	11	25	5	7	12	149
2008 to 09	53	-3	29	16	13	12	16	0	136
2009 to 10	38	20	26	17	10	5	16	-10	122
2010 to 11	46	2	17	23	8	-2	28	11	133
2011 to 12	81	33	10	17	11	14	22	-12	176
2012 to 13	59	5	-4	20	10	-22	12	7	87
2013 to 14	73	12	40	8	14	-3	18	-3	159
2014 to 15	53	-8	-1	7	7	4	-2	3	63
2015 to 16	39	13	23	8	31	13	16	16	159
2016 to 17	17	-10	19	1	1	4	22	21	75
2017 to 18	29	32	7	32	-8	-12	2	-20	62
2018 to 19	32	9	38	2	27	20	19	16	163
2019 to 20	0	0	0	-17	13	5	28	-1	28
2020 to 21	51	10	12	-13	0	9	-1	-27	41

Enrollment Patterns in Lyons Township High School

With expected short-term lags, enrollment patterns at Lyons Township High School followed new housing development, housing turnover, and resulting enrollment trends in its K-8 feeder districts. Table 10 provides annual enrollment by grade for the high school between 1962-63 and 2021-22. Total high school enrollment, which stood at 1,686 students in 1950-51, climbed to over 4,000 by 1962-63. Growth continued for another decade with enrollment peaking at 5,130 students in 1972-73. Total enrollment then declined virtually every year for the following ten years, down to 3,533 students in 1983-84. High school enrollment stabilized during 1984-85 and 1985-86 before declining again for the next four years, dipping to 2,847 students at the beginning of the 1989-90 school year. Total enrollment climbed considerably over the following sixteen years to 3,826 students in 2005-06. High school enrollment remained fairly stable through school year 2011-12 in the 3,800 range. It then rose to 4,065 students in 2017-18 before slipping back to 3,967 students in 2021-22.

Table 11 decomposes annual enrollment change in the high school from September 1985 to September 2021 into that amount generated by the size difference between entering ninth grade classes and the previous June's graduating twelfth grade classes, and that due to net student migration/transfer. Note that the heavy losses due to relatively smaller entering ninth grade classes basically ceased by the 1988-89 school year and became predominately positive

until 2016. The positive numbers since 1989 reflect the enrollment growth patterns in the elementary districts as they began to send larger eighth grade classes on to Lyons Township High School's ninth grade. This positive entering ninth grade versus prior year graduating twelfth grade class difference reversed to negative again in five of the past six years. Net student migration/transfer (which also includes dropouts) was negative in the vast majority of years between 1985 and 2011. However, since September 2011, net student migration/transfer has been generally positive each year with the exception of the September 2013 to September 2014 and the September 2017 to September 2018 periods.

Table 12 describes how this annual net student migration/transfer was distributed across the high school grade transitions each year, commencing in September 1985. Observe that the ninth to tenth grade and tenth to eleventh grade student migration/transfers have been largely negative since 2002, while the twelfth grade has been substantially larger than the prior year's eleventh grade class since 2015.

Table 10

Enrollment History in District 204: 1962–63 to 2021–22

School Year	9	10	11	12	Total
1962–63	1,082	1,138	963	826	4,009
1964–65	1,094	1,069	1,111	1,077	4,351
1966–67	1,179	1,199	1,084	1,052	4,514
1968–69	1,320	1,224	1,192	1,135	4,871
1970–71	1,257	1,311	1,294	1,173	5,035
1972–73	1,353	1,305	1,236	1,236	5,130
1974–75	1,227	1,291	1,305	1,273	5,096
1976–77	1,173	1,274	1,198	1,266	4,911
1978–79	1,028	1,133	1,099	1,179	4,439
1979–80	1,026	1,042	1,092	1,113	4,273
1980–81	916	1,026	1,001	1,093	4,036
1981–82	865	919	1,036	1,053	3,873
1982–83	875	860	883	1,088	3,706
1983–84	859	893	869	912	3,533
1984–85	913	869	908	860	3,550
1985–86	858	923	863	911	3,555
1986–87	719	879	893	851	3,342
1987–88	696	744	843	903	3,186
1988–89	709	721	695	859	2,984
1989–90	721	721	685	720	2,847

Continued . . .

Table 10—Continued

Enrollment History in District 204: 1962–63 to 2021–22

School Year	9	10	11	12	Total
1990–91	725	719	716	701	2,861
1991–92	705	739	717	746	2,907
1992–93	732	721	713	715	2,881
1993–94	751	742	748	715	2,956
1994–95	791	734	752	712	2,989
1995–96	765	789	714	724	2,992
1996–97	773	775	773	735	3,056
1997–98	742	798	752	765	3,057
1998–99	832	727	803	738	3,100
1999–00	893	803	726	808	3,230
2000–01	890	876	796	721	3,283
2001–02	844	893	887	810	3,434
2002–03	933	844	872	893	3,542
2003–04	938	907	850	869	3,564
2004–05	978	928	927	877	3,710
2005–06	1,015	976	904	931	3,826
2006–07	1,000	938	972	905	3,815
2007–08	979	959	955	947	3,840
2008–09	948	955	985	946	3,834
2009–10	1,012	927	962	984	3,885
2010–11	987	981	911	951	3,830
2011–12	1,003	981	983	912	3,879
2012–13	971	1,010	970	991	3,942
2013–14	990	994	1,006	977	3,967
2014–15	991	975	983	1,011	3,960
2015–16	1,027	988	963	1,006	3,984
2016–17	982	1,024	972	1,003	3,981
2017–18	1,023	965	1,034	1,043	4,065
2018–19	1,037	1,001	960	1,053	4,051
2019–20	976	1,045	991	977	3,989
2020–21	946	978	1,054	1,059	4,037
2021–22	974	928	964	1,101	3,967

Table 11

Decomposition of Annual Enrollment Change in District 204:
September 1985 to September 2021

Transition Year Sept. to Sept.	Change Total Enrollment	Entering 9 vs Exiting 12	Net Student Migration/ Transfer
1985 to 86	-213	-192	-21
1986 to 87	-156	-155	-1
1987 to 88	-202	-194	-8
1988 to 89	-137	-138	1
1989 to 90	14	5	9
1990 to 91	46	4	42
1991 to 92	-26	-14	-12
1992 to 93	75	36	39
1993 to 94	33	76	-43
1994 to 95	3	53	-50
1995 to 96	64	49	15
1996 to 97	1	7	-6
1997 to 98	43	67	-24
1998 to 99	130	155	-25
1999 to 00	53	82	-29
2000 to 01	151	123	28
2001 to 02	108	123	-15
2002 to 03	22	45	-23
2003 to 04	146	109	37
2004 to 05	116	138	-22
2005 to 06	-11	69	-80
2006 to 07	25	74	-49
2007 to 08	-6	1	-7
2008 to 09	51	66	-15
2009 to 10	-55	3	-58
2010 to 11	49	52	-3
2011 to 12	63	59	4
2012 to 13	25	-1	26
2013 to 14	-7	14	-21
2014 to 15	24	16	8
2015 to 16	-3	-24	21
2016 to 17	84	20	64
2017 to 18	-14	-6	-8
2018 to 19	-62	-77	15
2019 to 20	48	-31	79
2020 to 21	-70	-85	15

Table 12

Annual Net Migration/Transfer in District 204: September 1985 to September 2021

Transition Year Sept. to Sept.	Grade Transition			
	9-10	10-11	11-12	12-Total
1985 to 86	21	-30	-12	-21
1986 to 87	25	-36	10	-1
1987 to 88	25	-49	16	-8
1988 to 89	12	-36	25	1
1989 to 90	-2	-5	16	9
1990 to 91	14	-2	30	42
1991 to 92	16	-26	-2	-12
1992 to 93	10	27	2	39
1993 to 94	-17	10	-36	-43
1994 to 95	-2	-20	-28	-50
1995 to 96	10	-16	21	15
1996 to 97	25	-23	-8	-6
1997 to 98	-15	5	-14	-24
1998 to 99	-29	-1	5	-25
1999 to 00	-17	-7	-5	-29
2000 to 01	3	11	14	28
2001 to 02	0	-21	6	-15
2002 to 03	-26	6	-3	-23
2003 to 04	-10	20	27	37
2004 to 05	-2	-24	4	-22
2005 to 06	-77	-4	1	-80
2006 to 07	-41	17	-25	-49
2007 to 08	-24	26	-9	-7
2008 to 09	-21	7	-1	-15
2009 to 10	-31	-16	-11	-58
2010 to 11	-6	2	1	-3
2011 to 12	7	-11	8	4
2012 to 13	23	-4	7	26
2013 to 14	-15	-11	5	-21
2014 to 15	-3	-12	23	8
2015 to 16	-3	-16	40	21
2016 to 17	-17	10	71	64
2017 to 18	-22	-5	19	-8
2018 to 19	8	-10	17	15
2019 to 20	2	9	68	79
2020 to 21	-18	-14	47	15

Future Enrollment at Lyons Township High School

Let me now turn to updating enrollment projections for Lyons Township High School and extending them to school year 2036–37. My analysis of (1) recent demographic dynamics in the villages served by District 204, (2) new housing development and housing turnover anticipated in the high school attendance area, (3) current grade-by-grade enrollments in the elementary feeder districts, and (4) local public school student migration/transfer patterns lead me to forecast an approximately 230-student enrollment decline at the high school over the next six years with slow increases thereafter. Total high school enrollment, which in 2021–22 stood at 3,967, is projected to drop to 3,736 in 2027–28 and then climb back to 3,905 in 2036–37. Note that these numbers are well below the 5,000+ enrollments the District experienced in the first half of the 1970s. Before elaborating upon these projections, I'll summarize the methodology underlying them.

The initial methodological step in projecting enrollment at Lyons Township High School through school year 2036–37 was to forecast annual eighth grade enrollments in its sending K–8 districts through 2035–36. This was done using a modified cohort survival method applying adjusted average grade-by-grade student migration/retention progressions (similar to those in the prior student migration/transfer tables) to the sending districts' enrolled K–7 classes and projecting them forward annually. I used the past four years as the basis for

computing baseline average grade-by-grade student progressions. A similar modified cohort survival method was next used to project high school enrollment, by grade and by year, through school year 2036–37. The eighth to ninth grade student progression numbers also incorporated net transfers to the Lyons Township High School ninth grade classes from private and parochial schools and from outside the District.

To obtain the eighth to ninth grade progressions, I compared incoming LTHS freshman class sizes to the previous year’s eighth grade class sizes in the public sending districts. The annual freshmen numbers for recent years indicate that school districts 101, 102, 105, 106 and 107 send almost all of their graduating eighth-grade students to Lyons Township High School the following September, while District 103 sends approximately 25 percent. As noted, the annual eighth-grade to ninth-grade progressions also included ninth-grade class transfers from private and parochial schools, as well as student move-ins from outside of District 204.

Changes in future births to residents will not affect high school enrollment before the year 2036–37 since virtually all those who will enter the high school to that date are already born. New housing development will likely be limited, so the turnover of existing housing units (including teardowns and replacement housing) will be the critical factor shaping future enrollment at Lyons Township High School and its sending districts. Table 4 showed that nearly a quarter of all

residents in the villages served by the high School were at least 60 years of age in 2020 with two village having over 40 percent age 60 and above. My expectation is that an increasing number of District 204 housing units will turn over to younger families in the next five to fifteen years fostering renewed enrollment growth. Recognizing, however, that future events could alter amounts of new housing development, housing turnover, and resulting in-migration of families with school-age children, three separate series of enrollment projections were made based on different assumptions about these dynamics. The three projection series and their assumptions are as follows:

- Series A* Enrollment projection assuming future new residential development, housing turnover, and in-migration of families with school-age children to District 204 *are less than currently anticipated* through school year 2036–37;
- Series B* Enrollment projection assuming future new residential development, housing turnover, and in-migration of families with school-age children to District 204 *occur as currently anticipated* through school year 2036–37;
- Series C* Enrollment projection assuming future new residential development, housing turnover, and in-migration of families with school-age children to District 204 *are greater than currently anticipated* through school year 2036–37.

Student net migration/transfer parameters were adjusted down by approximately 15 percent in Series A and up by approximately 15 percent in Series C to generate the minimum and maximum projected high school enrollments over the forecast period. My experience in projecting high school enrollments during the past forty years in Chicago’s suburbs is that actual

longer-term enrollment outcomes have almost always fallen within these parameters and usually quite close to the Series B projections. Thus, to repeat, the three projection series will provide, by year and by grade through 2036–37, (A) the minimum number of students that may be anticipated, (B) the most likely number of future students to expect, and (C) the maximum number of students that can be foreseen.

If low-growth Series A assumptions eventuate, Table 13 reveals that total high school enrollment which was 3,967 last year, will decline to 3,487 students in school year 2027–28. Afterward, total enrollment should stabilize near that number. Whereas this low projection series may be considered too conservative by many, should the nation slip into a prolonged recession or mortgage interest rates continue to rapidly rise and remain high, this low projection series could become a reality.

Under the more likely Series B assumptions, Table 14 indicates that total high school enrollment will decline modestly during the coming six years to 3,736 students in 2027–28. Total enrollment will then edge back to 3,905 in school year 2036–37. This projection series, recall, assumes that new housing development (including teardowns and replacement housing) and housing turnover will occur as presently anticipated.

Under the Series C (accelerated growth) model assumptions, Table 15 reveals that total high school enrollment will still modestly decline to 3,936

students this Fall (2022–23). Afterward, except for a couple of years of similarly modest declines, total enrollment under the Series C model will rise to 4,315 in 2034–35 and stabilize. Whereas I believe the Series C enrollment projections are less likely to occur than Series B, the large proportion of households in the District 204 attendance area who are over age 60 makes substantial future housing turnover to families with school-age children a possibility. This would push future high school enrollment above that of Series B but, in my judgment, not as high as that projected in Series C.

Table 16 provides a summary of annual enrollment projections through 2036–37 for Lyons Township High School under each set of assumptions. Figure 3 charts total high school enrollments annually between September 1990 and September 2021 along with the Series A, Series B, and Series C annual projections through school year 2036–37.

Concluding Remarks

As I have stated in prior reports, no demographer has a crystal ball. In this report, I have assembled the best information currently available and applied professional techniques and judgment to produce the updated and extended enrollment projections for Lyons Township High School. Given that we are in turbulent economic times, these projections should be monitored annually and updated periodically to ensure that policy decisions are based on the latest and most reliable figures. At present, it is my hope that the enrollment projections, together with other demographic information contained in this report, will be of value to the Board of Education, administrators, teachers, and concerned citizens as plans are made for future space, staff, and education needs at Lyons Township High School District 204.

John D. Kasarda, Ph.D.
San Diego, California
August 13, 2022

Table 13

Enrollment Projection Assuming Future New Residential Development, Housing Turnover,
and In-migration of Families with School-age Children to District 204
Are Less than Currently Anticipated through School Year 2036–37

District 204

Grade	2021– 22	<i>Series A Projection</i>														
		2022– 23	2023– 24	2024– 25	2025– 26	2026– 27	2027– 28	2028– 29	2029– 30	2030– 31	2031– 32	2032– 33	2033– 34	2034– 35	2035– 36	2036– 37
9	974	967	929	875	929	839	890	897	921	866	858	869	865	873	871	878
10	928	957	950	912	858	912	825	876	883	907	852	844	855	851	859	857
11	964	912	941	934	896	842	900	813	864	871	895	840	832	843	839	847
12	1,101	988	936	965	958	920	872	930	843	894	901	921	866	858	869	865
Total	3,967	3,824	3,756	3,686	3,641	3,513	3,487	3,516	3,511	3,538	3,506	3,474	3,418	3,425	3,438	3,447

Table 14

Enrollment Projection Assuming Future New Residential Development, Housing Turnover,
and In-migration of Families with School-age Children to District 204
Occur as Currently Anticipated through School Year 2036–37

District t 204

Grade	2021– 22	<i>Series B Projection</i>														
		2022– 23	2023– 24	2024– 25	2025– 26	2026– 27	2027– 28	2028– 29	2029– 30	2030– 31	2031– 32	2032– 33	2033– 34	2034– 35	2035– 36	2036– 37
9	974	988	962	917	980	897	944	952	981	937	968	980	974	980	976	983
10	928	966	980	954	909	972	889	936	944	973	929	960	972	966	972	968
11	964	921	959	973	947	902	965	882	929	937	966	922	953	965	959	965
12	1,101	1,010	967	1,005	1,019	993	938	1,001	918	965	973	996	952	983	995	989
Total	3,967	3,885	3,868	3,849	3,855	3,764	3,736	3,771	3,772	3,812	3,836	3,858	3,851	3,894	3,902	3,905

Table 15

Enrollment Projection Assuming Future New Residential Development, Housing Turnover,
and In-migration of Families with School-age Children to District 204
Are Greater than Currently Anticipated through School Year 2036–37

District 204

Grade	2021– 22	<i>Series C Projection</i>														
		2022– 23	2023– 24	2024– 25	2025– 26	2026– 27	2027– 28	2028– 29	2029– 30	2030– 31	2031– 32	2032– 33	2033– 34	2034– 35	2035– 36	2036– 37
9	974	1,007	994	962	1,035	959	1,000	1,011	1,045	1,013	1,070	1,079	1,069	1,074	1,069	1,076
10	928	975	1,008	995	963	1,036	956	997	1,008	1,042	1,010	1,067	1,076	1,066	1,071	1,066
11	964	930	977	1,010	997	965	1,034	954	995	1,006	1,040	1,008	1,065	1,074	1,064	1,069
12	1,101	1,024	990	1,037	1,070	1,057	1,011	1,080	1,000	1,041	1,052	1,076	1,044	1,101	1,110	1,100
Total	3,967	3,936	3,969	4,004	4,065	4,017	4,001	4,042	4,048	4,102	4,172	4,230	4,254	4,315	4,314	4,311

Table 16

Summary of Enrollment Projections for District 204
under Series A, Series B and Series C Assumptions through 2036–37

School Year	Series A	Series B	Series C
2021–22	3,967	3,967	3,967
2022–23	3,824	3,885	3,936
2023–24	3,756	3,868	3,969
2024–25	3,686	3,849	4,004
2025–26	3,641	3,855	4,065
2026–27	3,513	3,764	4,017
2027–28	3,487	3,736	4,001
2028–29	3,516	3,771	4,042
2029–30	3,511	3,772	4,048
2030–31	3,538	3,812	4,102
2031–32	3,506	3,836	4,172
2032–33	3,474	3,858	4,230
2033–34	3,418	3,851	4,254
2034–35	3,425	3,894	4,315
2035–36	3,438	3,902	4,314
2036–37	3,447	3,905	4,311

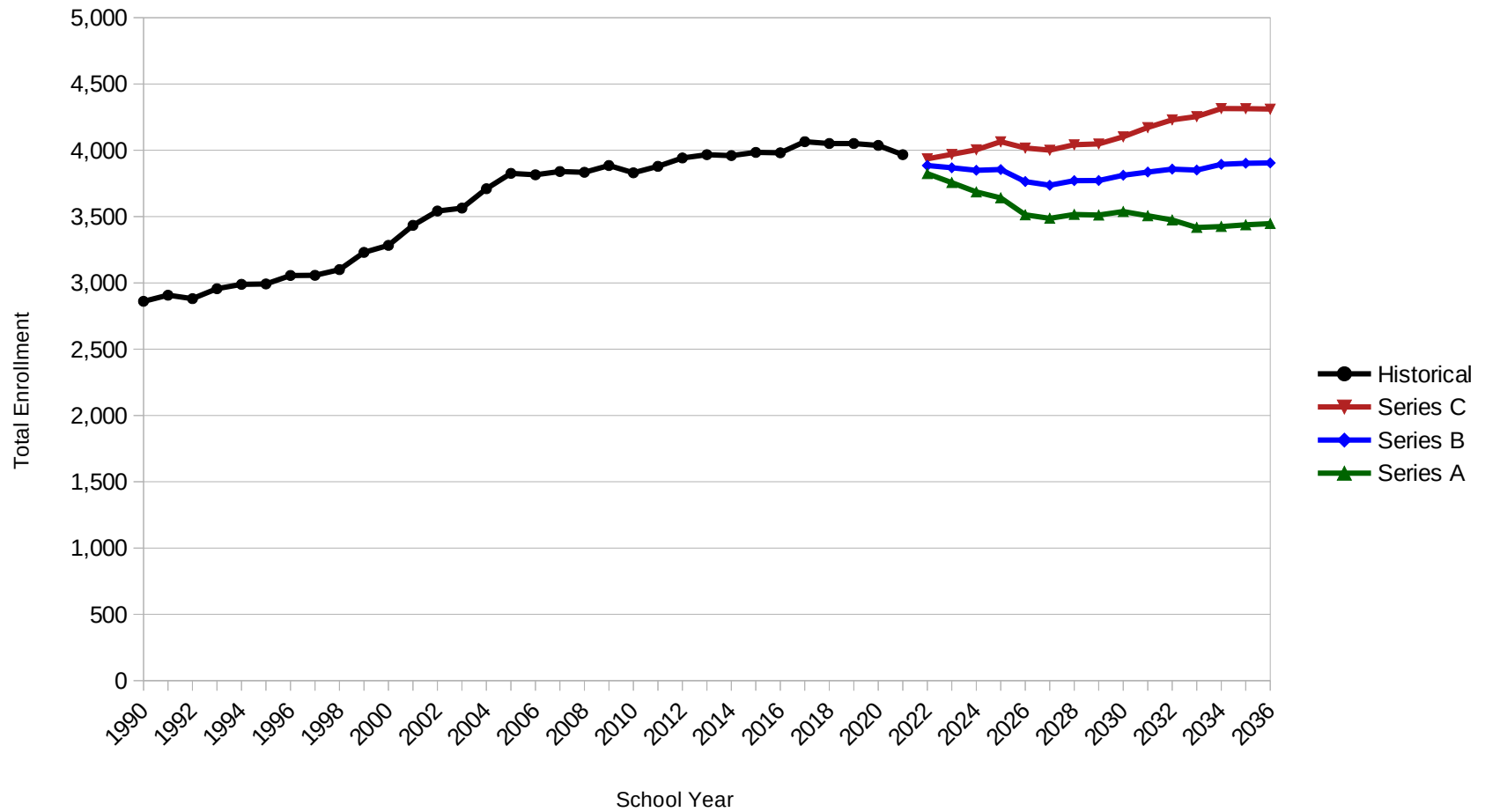


Figure 3. Total High School (9–12) Enrollment for District 204: Historical (1990–91 to 2021–22) and Projected (2022–23 to 2036–37) under Series A, Series B, and Series C Assumptions

Appendix A

Estimates of Current Housing Stock by Year Structure Built in Municipalities Served by Lyons Township High School District 204

Current Housing Stuck by Year Structure Built

Year Structure Built	Brookfield		Burr Ridge		Countryside		Forest View		Hinsdale	
	Estimate	% Total	Estimate	% Total	Estimate	% Total	Estimate	% Total	Estimate	% Total
Total	7,499	100.0	4,632	100.0	2,742	100.0	375	100.0	6,206	100.0
2014 or later	33	0.4	193	4.2	27	1.0	0	0.0	244	3.9
2010 to 2013	0	0.0	83	1.8	66	2.4	0	0.0	198	3.2
2000 to 2009	143	1.9	787	17.0	274	10.0	6	1.6	1,033	16.6
1990 to 1999	145	1.9	960	20.7	196	7.1	24	6.4	821	13.2
1980 to 1989	164	2.2	1,066	23.0	186	6.8	3	0.8	393	6.3
1970 to 1979	863	11.5	860	18.6	875	31.9	21	5.6	737	11.9
1960 to 1969	693	9.2	143	3.1	420	15.3	36	9.6	719	11.6
1950 to 1959	1,904	25.4	450	9.7	448	16.3	255	68.0	696	11.2
1940 to 1949	998	13.3	52	1.1	139	5.1	18	4.8	181	2.9
1939 or earlier	2,556	34.1	38	0.8	111	4.0	12	3.2	1,184	19.1

Current Housing Stuck by Year Structure Built

Year Structure Built	Hodgkins		Indian Head Park		La Grange		La Grange Park		Lyons	
	Estimate	% Total	Estimate	% Total	Estimate	% Total	Estimate	% Total	Estimate	% Total
Total	735	100.0	1,688	100.0	5,687	100.0	5,323	100.0	4,004	100.0
2014 or later	76	10.3	0	0.0	51	0.9	66	1.2	15	0.4
2010 to 2013	13	1.8	0	0.0	14	0.2	0	0.0	16	0.4
2000 to 2009	128	17.4	172	10.2	535	9.4	288	5.4	151	3.8
1990 to 1999	274	37.3	226	13.4	192	3.4	168	3.2	146	3.6
1980 to 1989	84	11.4	297	17.6	223	3.9	143	2.7	310	7.7
1970 to 1979	61	8.3	693	41.1	447	7.9	418	7.9	578	14.4
1960 to 1969	13	1.8	152	9.0	470	8.3	622	11.7	572	14.3
1950 to 1959	46	6.3	130	7.7	1,078	19.0	2,260	42.5	955	23.9
1940 to 1949	19	2.6	10	0.6	612	10.8	578	10.9	414	10.3
1939 or earlier	21	2.9	8	0.5	2,065	36.3	780	14.7	847	21.2

Current Housing Stuck by Year Structure Built

Year Structure Built	McCook		Stickney		Western Springs		Willow Springs		Sum	
	Estimate	% Total	Estimate	% Total	Estimate	% Total	Estimate	% Total	Estimate	% Total
Total	115	100.0	2,589	100.0	4,664	100.0	2,347	100.0	48,606	100.0
2014 or later	0	0.0	0	0.0	171	3.7	6	0.3	882	1.8
2010 to 2013	0	0.0	0	0.0	59	1.3	16	0.7	465	1.0
2000 to 2009	3	2.6	0	0.0	372	8.0	400	17.0	4,292	8.8
1990 to 1999	5	4.3	109	4.2	289	6.2	201	8.6	3,756	7.7
1980 to 1989	10	8.7	244	9.4	60	1.3	313	13.3	3,496	7.2
1970 to 1979	23	20.0	56	2.2	390	8.4	488	20.8	6,510	13.4
1960 to 1969	25	21.7	422	16.3	912	19.6	346	14.7	5,545	11.4
1950 to 1959	28	24.3	1,073	41.4	1,100	23.6	371	15.8	10,794	22.2
1940 to 1949	7	6.1	205	7.9	375	8.0	53	2.3	3,661	7.5
1939 or earlier	14	12.2	480	18.5	936	20.1	153	6.5	9,205	18.9

Source. Bureau of the Census. American Community Survey, 5-Year Estimates, 2020.

Appendix B

**Enrollment History,
Decomposition of Annual Sources of Enrollment Change,
and
Net Annual Student Migration/Transfer
of
Elementary School Districts Feeding District 204**

District 101
Enrollment History

School Year	K	1	2	3	4	5	6	7	8	K-8	Sp. Ed.	Total
1985-86	110	92	106	73	85	82	94	90	99	831	0	831
1986-87	86	98	81	103	76	89	85	95	88	801	0	801
1987-88	86	105	84	105	95	79	93	95	102	844	0	844
1988-89	100	101	84	109	77	112	74	93	92	842	0	842
1989-90	104	86	105	81	107	77	122	77	95	854	0	854
1990-91	112	104	86	105	82	107	85	128	82	891	0	891
1991-92	120	107	108	87	109	82	110	83	119	925	0	925
1992-93	110	125	106	106	87	105	84	109	86	918	0	918
1993-94	144	115	129	110	108	85	109	87	104	991	0	991
1994-95	139	152	116	120	115	107	85	111	88	1,033	0	1,033
1995-96	140	147	148	120	122	114	112	86	110	1,099	0	1,099
1996-97	146	154	154	144	117	124	111	110	87	1,147	0	1,147
1997-98	149	154	154	144	139	107	121	110	104	1,182	0	1,182
1998-99	152	165	148	157	142	140	109	124	109	1,246	0	1,246
1999-00	151	165	157	143	159	143	143	103	125	1,289	0	1,289
2000-01	155	154	173	157	143	165	143	143	102	1,335	0	1,335
2001-02	147	163	156	179	161	142	164	138	143	1,393	0	1,393
2002-03	149	151	162	155	180	163	144	164	144	1,412	0	1,412
2003-04	140	161	150	163	150	179	163	141	161	1,408	0	1,408
2004-05	157	142	166	159	164	153	188	161	142	1,432	0	1,432
2005-06	133	169	145	166	161	162	155	190	154	1,435	0	1,435
2006-07	144	146	167	145	170	164	167	159	190	1,452	0	1,452
2007-08	169	151	154	168	149	172	162	169	160	1,454	0	1,454
2008-09	142	184	161	163	172	153	186	170	171	1,502	0	1,502
2009-10	145	151	186	168	169	181	160	188	178	1,526	0	1,526
2010-11	173	164	150	186	167	174	181	162	183	1,540	—	1,540
2011-12	127	160	157	156	180	167	172	178	165	1,462	—	1,462
2012-13	149	142	165	156	158	183	171	175	171	1,470	—	1,470
2013-14	135	168	143	165	163	154	177	170	173	1,448	—	1,448
2014-15	119	157	171	143	166	164	158	177	169	1,424	—	1,424
2015-16	136	138	157	170	148	166	165	157	177	1,414	—	1,414
2016-17	136	142	144	161	172	150	169	163	158	1,395	—	1,395
2017-18	145	140	146	148	171	175	155	167	167	1,414	—	1,414
2018-19	144	154	146	151	155	176	171	152	167	1,416	—	1,416
2019-20	160	158	157	152	150	160	179	171	151	1,438	—	1,438
2020-21	160	171	167	164	149	153	163	178	169	1,474	—	1,474
2021-22	152	171	171	170	160	149	153	163	177	1,466	—	1,466

District 101

Decomposition of Annual Sources of Enrollment Change

Transition Year Sept. to Sept.	Change Total Enrollment	Entering K vs Exiting 8	Net Student Migration/ Transfer	Change Sp. Ed.
1985 to 86	-30	-13	-17	0
1986 to 87	43	-2	45	0
1987 to 88	-2	-2	0	0
1988 to 89	12	12	0	0
1989 to 90	37	17	20	0
1990 to 91	34	38	-4	0
1991 to 92	-7	-9	2	0
1992 to 93	73	58	15	0
1993 to 94	42	35	7	0
1994 to 95	66	52	14	0
1995 to 96	48	36	12	0
1996 to 97	35	62	-27	0
1997 to 98	64	48	16	0
1998 to 99	43	42	1	0
1999 to 00	46	30	16	0
2000 to 01	58	45	13	0
2001 to 02	19	6	13	0
2002 to 03	-4	-4	0	0
2003 to 04	24	-4	28	0
2004 to 05	3	-9	12	0
2005 to 06	17	-10	27	0
2006 to 07	2	-21	23	0
2007 to 08	48	-18	66	0
2008 to 09	24	-26	50	0
2009 to 10	14	-5	19	0
2010 to 11	-78	-56	-22	0
2011 to 12	8	-16	24	0
2012 to 13	-22	-36	14	0
2013 to 14	-24	-54	30	0
2014 to 15	-10	-33	23	0
2015 to 16	-19	-41	22	0
2016 to 17	19	-13	32	0
2017 to 18	2	-23	25	0
2018 to 19	22	-7	29	0
2019 to 20	36	9	27	0
2020 to 21	-8	-17	9	0

District 101

Net Annual Student Migration/Transfer

Transition Year Sept. to Sept.	Grade Transition								Total
	K-1	1-2	2-3	3-4	4-5	5-6	6-7	7-8	
1985 to 86	-12	-11	-3	3	4	3	1	-2	-17
1986 to 87	19	-14	24	-8	3	4	10	7	45
1987 to 88	15	-21	25	-28	17	-5	0	-3	0
1988 to 89	-14	4	-3	-2	0	10	3	2	0
1989 to 90	0	0	0	1	0	8	6	5	20
1990 to 91	-5	4	1	4	0	3	-2	-9	-4
1991 to 92	5	-1	-2	0	-4	2	-1	3	2
1992 to 93	5	4	4	2	-2	4	3	-5	15
1993 to 94	8	1	-9	5	-1	0	2	1	7
1994 to 95	8	-4	4	2	-1	5	1	-1	14
1995 to 96	14	7	-4	-3	2	-3	-2	1	12
1996 to 97	8	0	-10	-5	-10	-3	-1	-6	-27
1997 to 98	16	-6	3	-2	1	2	3	-1	16
1998 to 99	13	-8	-5	2	1	3	-6	1	1
1999 to 00	3	8	0	0	6	0	0	-1	16
2000 to 01	8	2	6	4	-1	-1	-5	0	13
2001 to 02	4	-1	-1	1	2	2	0	6	13
2002 to 03	12	-1	1	-5	-1	0	-3	-3	0
2003 to 04	2	5	9	1	3	9	-2	1	28
2004 to 05	12	3	0	2	-2	2	2	-7	12
2005 to 06	13	-2	0	4	3	5	4	0	27
2006 to 07	7	8	1	4	2	-2	2	1	23
2007 to 08	15	10	9	4	4	14	8	2	66
2008 to 09	9	2	7	6	9	7	2	8	50
2009 to 10	19	-1	0	-1	5	0	2	-5	19
2010 to 11	-13	-7	6	-6	0	-2	-3	3	-22
2011 to 12	15	5	-1	2	3	4	3	-7	24
2012 to 13	19	1	0	7	-4	-6	-1	-2	14
2013 to 14	22	3	0	1	1	4	0	-1	30
2014 to 15	19	0	-1	5	0	1	-1	0	23
2015 to 16	6	6	4	2	2	3	-2	1	22
2016 to 17	4	4	4	10	3	5	-2	4	32
2017 to 18	9	6	5	7	5	-4	-3	0	25
2018 to 19	14	3	6	-1	5	3	0	-1	29
2019 to 20	11	9	7	-3	3	3	-1	-2	27
2020 to 21	11	0	3	-4	0	0	0	-1	9

District 102
Enrollment History

School Year	K	1	2	3	4	5	6	7	8	K-8	Sp. Ed.	Total
1985-86	221	243	191	180	199	198	169	219	200	1,820	133	1,953
1986-87	238	226	253	191	184	225	201	191	216	1,925	169	2,094
1987-88	230	239	226	243	190	190	212	213	196	1,939	180	2,119
1988-89	250	239	222	231	252	188	203	215	221	2,021	174	2,195
1989-90	256	252	232	230	220	253	191	224	226	2,084	154	2,238
1990-91	252	266	249	231	233	228	246	216	226	2,147	180	2,327
1991-92	277	260	265	258	242	237	212	250	220	2,221	165	2,386
1992-93	259	291	275	277	239	234	241	240	266	2,322	159	2,481
1993-94	259	276	300	280	275	236	239	250	249	2,364	192	2,556
1994-95	295	279	277	313	280	274	247	242	261	2,468	133	2,601
1995-96	252	306	281	271	301	286	273	254	244	2,468	142	2,610
1996-97	278	280	305	285	284	292	299	279	255	2,557	73	2,630
1997-98	272	288	286	301	302	275	298	310	285	2,617	55	2,672
1998-99	236	283	270	284	299	282	283	285	305	2,527	50	2,577
1999-00	239	253	285	289	288	296	287	286	298	2,521	58	2,579
2000-01	262	275	246	283	285	277	299	301	296	2,524	55	2,579
2001-02	250	292	279	251	277	296	282	309	297	2,533	52	2,585
2002-03	253	283	296	280	255	286	297	287	303	2,540	56	2,596
2003-04	272	280	291	293	295	263	302	294	287	2,577	55	2,632
2004-05	273	312	273	296	311	299	266	307	301	2,638	65	2,703
2005-06	290	301	304	280	301	301	304	263	321	2,665	56	2,721
2006-07	287	336	318	313	280	300	309	305	262	2,710	45	2,755
2007-08	308	329	336	314	313	284	310	308	299	2,801	42	2,843
2008-09	315	328	324	338	309	315	280	315	314	2,838	100	2,938
2009-10	312	330	329	328	349	323	322	291	313	2,897	87	2,984
2010-11	284	324	336	331	327	348	326	326	287	2,889	—	2,889
2011-12	303	303	332	343	337	332	349	344	338	2,981	—	2,981
2012-13	318	313	310	334	345	340	336	355	345	2,996	—	2,996
2013-14	322	344	324	310	333	355	342	338	360	3,028	—	3,028
2014-15	321	328	343	335	324	339	357	345	343	3,035	—	3,035
2015-16	296	327	325	345	332	326	342	353	346	2,992	—	2,992
2016-17	332	320	338	327	351	338	334	346	361	3,047	—	3,047
2017-18	279	333	317	346	329	352	348	344	354	3,002	—	3,002
2018-19	289	295	334	313	355	327	349	345	339	2,946	—	2,946
2019-20	319	317	306	348	315	360	337	360	357	3,019	—	3,019
2020-21	301	312	309	297	344	319	367	352	353	2,954	—	2,954
2021-22	277	326	309	312	298	344	319	368	345	2,898	—	2,898

District 102

Decomposition of Annual Sources of Enrollment Change

Transition Year Sept. to Sept.	Change Total Enrollment	Entering K vs Exiting 8	Net Student Migration/ Transfer	Change Sp. Ed.
1985 to 86	141	38	67	36
1986 to 87	25	14	0	11
1987 to 88	76	54	28	-6
1988 to 89	43	35	28	-20
1989 to 90	89	26	37	26
1990 to 91	59	51	23	-15
1991 to 92	95	39	62	-6
1992 to 93	75	-7	49	33
1993 to 94	45	46	58	-59
1994 to 95	9	-9	9	9
1995 to 96	20	34	55	-69
1996 to 97	42	17	43	-18
1997 to 98	-95	-49	-41	-5
1998 to 99	2	-66	60	8
1999 to 00	0	-36	39	-3
2000 to 01	6	-46	55	-3
2001 to 02	11	-44	51	4
2002 to 03	36	-31	68	-1
2003 to 04	71	-14	75	10
2004 to 05	18	-11	38	-9
2005 to 06	34	-34	79	-11
2006 to 07	88	46	45	-3
2007 to 08	95	16	21	58
2008 to 09	46	-2	61	-13
2009 to 10	-95	-29	21	-87
2010 to 11	92	16	76	0
2011 to 12	15	-20	35	0
2012 to 13	32	-23	55	0
2013 to 14	7	-39	46	0
2014 to 15	-43	-47	4	0
2015 to 16	55	-14	69	0
2016 to 17	-45	-82	37	0
2017 to 18	-56	-65	9	0
2018 to 19	73	-20	93	0
2019 to 20	-65	-56	-9	0
2020 to 21	-56	-76	20	0

District 102

Net Annual Student Migration/Transfer

Transition Year Sept. to Sept.	Grade Transition								
	K-1	1-2	2-3	3-4	4-5	5-6	6-7	7-8	Total
1985 to 86	5	10	0	4	26	3	22	-3	67
1986 to 87	1	0	-10	-1	6	-13	12	5	0
1987 to 88	9	-17	5	9	-2	13	3	8	28
1988 to 89	2	-7	8	-11	1	3	21	11	28
1989 to 90	10	-3	-1	3	8	-7	25	2	37
1990 to 91	8	-1	9	11	4	-16	4	4	23
1991 to 92	14	15	12	-19	-8	4	28	16	62
1992 to 93	17	9	5	-2	-3	5	9	9	49
1993 to 94	20	1	13	0	-1	11	3	11	58
1994 to 95	11	2	-6	-12	6	-1	7	2	9
1995 to 96	28	-1	4	13	-9	13	6	1	55
1996 to 97	10	6	-4	17	-9	6	11	6	43
1997 to 98	11	-18	-2	-2	-20	8	-13	-5	-41
1998 to 99	17	2	19	4	-3	5	3	13	60
1999 to 00	36	-7	-2	-4	-11	3	14	10	39
2000 to 01	30	4	5	-6	11	5	10	-4	55
2001 to 02	33	4	1	4	9	1	5	-6	51
2002 to 03	27	8	-3	15	8	16	-3	0	68
2003 to 04	40	-7	5	18	4	3	5	7	75
2004 to 05	28	-8	7	5	-10	5	-3	14	38
2005 to 06	46	17	9	0	-1	8	1	-1	79
2006 to 07	42	0	-4	0	4	10	-1	-6	45
2007 to 08	20	-5	2	-5	2	-4	5	6	21
2008 to 09	15	1	4	11	14	7	11	-2	61
2009 to 10	12	6	2	-1	-1	3	4	-4	21
2010 to 11	19	8	7	6	5	1	18	12	76
2011 to 12	10	7	2	2	3	4	6	1	35
2012 to 13	26	11	0	-1	10	2	2	5	55
2013 to 14	6	-1	11	14	6	2	3	5	46
2014 to 15	6	-3	2	-3	2	3	-4	1	4
2015 to 16	24	11	2	6	6	8	4	8	69
2016 to 17	1	-3	8	2	1	10	10	8	37
2017 to 18	16	1	-4	9	-2	-3	-3	-5	9
2018 to 19	28	11	14	2	5	10	11	12	93
2019 to 20	-7	-8	-9	-4	4	7	15	-7	-9
2020 to 21	25	-3	3	1	0	0	1	-7	20

District 103
Enrollment History

School Year	K	1	2	3	4	5	6	7	8	K-8	Sp. Ed.	Total
1985-86	178	159	155	150	163	126	161	140	170	1,402	37	1,439
1986-87	135	166	152	146	146	148	131	163	147	1,334	45	1,379
1987-88	162	136	175	149	151	147	151	134	158	1,363	100	1,463
1988-89	159	168	144	167	151	151	157	153	123	1,373	79	1,452
1989-90	173	164	158	152	177	155	156	149	146	1,430	80	1,510
1990-91	172	176	160	153	153	179	162	160	154	1,469	97	1,566
1991-92	191	172	181	181	163	152	185	166	156	1,547	99	1,646
1992-93	194	195	179	179	184	168	166	189	161	1,615	101	1,716
1993-94	207	197	184	178	173	185	165	168	193	1,650	71	1,721
1994-95	189	198	187	191	193	181	185	174	172	1,670	47	1,717
1995-96	168	198	198	178	185	192	189	172	173	1,653	59	1,712
1996-97	200	203	212	201	188	180	202	198	169	1,753	52	1,805
1997-98	203	212	207	206	211	182	183	198	197	1,799	35	1,834
1998-99	231	219	212	211	217	220	183	194	203	1,890	48	1,938
1999-00	243	239	226	221	214	213	221	196	194	1,967	56	2,023
2000-01	203	231	235	230	224	219	217	223	200	1,982	57	2,039
2001-02	279	231	242	241	251	237	225	205	226	2,137	52	2,189
2002-03	229	271	212	219	235	246	236	209	211	2,068	47	2,115
2003-04	209	234	270	226	226	252	247	253	210	2,127	30	2,157
2004-05	256	222	235	259	242	230	241	257	244	2,186	22	2,208
2005-06	255	251	223	264	256	231	229	238	227	2,174	24	2,198
2006-07	279	260	250	219	249	245	215	239	218	2,174	22	2,196
2007-08	238	300	253	251	222	252	228	218	241	2,203	24	2,227
2008-09	244	238	285	256	258	228	246	224	206	2,185	20	2,205
2009-10	275	254	245	305	258	255	235	240	219	2,286	13	2,299
2010-11	250	266	258	255	312	265	246	241	232	2,325	—	2,325
2011-12	241	267	257	262	271	307	258	242	225	2,330	—	2,330
2012-13	285	273	275	253	257	268	307	263	236	2,417	—	2,417
2013-14	292	273	259	262	247	252	247	310	263	2,405	—	2,405
2014-15	250	304	284	264	252	247	249	254	293	2,397	—	2,397
2015-16	248	245	285	276	254	246	249	243	258	2,304	—	2,304
2016-17	255	234	245	297	277	265	246	242	243	2,304	—	2,304
2017-18	243	251	233	253	281	273	252	253	244	2,283	—	2,283
2018-19	219	234	258	230	255	276	254	243	238	2,207	—	2,207
2019-20	232	203	235	262	220	255	265	250	240	2,162	—	2,162
2020-21	228	216	205	229	244	230	247	260	247	2,106	—	2,106
2021-22	199	225	221	201	220	235	224	240	247	2,012	—	2,012

District 103

Decomposition of Annual Sources of Enrollment Change

Transition Year Sept. to Sept.	Change Total Enrollment	Entering K vs Exiting 8	Net Student Migration/ Transfer	Change Sp. Ed.
1985 to 86	-60	-35	-33	8
1986 to 87	84	15	14	55
1987 to 88	-11	1	9	-21
1988 to 89	58	50	7	1
1989 to 90	56	26	13	17
1990 to 91	80	37	41	2
1991 to 92	70	38	30	2
1992 to 93	5	46	-11	-30
1993 to 94	-4	-4	24	-24
1994 to 95	-5	-4	-13	12
1995 to 96	93	27	73	-7
1996 to 97	29	34	12	-17
1997 to 98	104	34	57	13
1998 to 99	85	40	37	8
1999 to 00	16	9	6	1
2000 to 01	150	79	76	-5
2001 to 02	-74	3	-72	-5
2002 to 03	42	-2	61	-17
2003 to 04	51	46	13	-8
2004 to 05	-10	11	-23	2
2005 to 06	-2	52	-52	-2
2006 to 07	31	20	9	2
2007 to 08	-22	3	-21	-4
2008 to 09	94	69	32	-7
2009 to 10	26	31	8	-13
2010 to 11	5	9	-4	0
2011 to 12	87	60	27	0
2012 to 13	-12	56	-68	0
2013 to 14	-8	-13	5	0
2014 to 15	-93	-45	-48	0
2015 to 16	0	-3	3	0
2016 to 17	-21	0	-21	0
2017 to 18	-76	-25	-51	0
2018 to 19	-45	-6	-39	0
2019 to 20	-56	-12	-44	0
2020 to 21	-94	-48	-46	0

District 103

Net Annual Student Migration/Transfer

Transition Year Sept. to Sept.	Grade Transition								
	K-1	1-2	2-3	3-4	4-5	5-6	6-7	7-8	Total
1985 to 86	-12	-7	-9	-4	-15	5	2	7	-33
1986 to 87	1	9	-3	5	1	3	3	-5	14
1987 to 88	6	8	-8	2	0	10	2	-11	9
1988 to 89	5	-10	8	10	4	5	-8	-7	7
1989 to 90	3	-4	-5	1	2	7	4	5	13
1990 to 91	0	5	21	10	-1	6	4	-4	41
1991 to 92	4	7	-2	3	5	14	4	-5	30
1992 to 93	3	-11	-1	-6	1	-3	2	4	-11
1993 to 94	-9	-10	7	15	8	0	9	4	24
1994 to 95	9	0	-9	-6	-1	8	-13	-1	-13
1995 to 96	35	14	3	10	-5	10	9	-3	73
1996 to 97	12	4	-6	10	-6	3	-4	-1	12
1997 to 98	16	0	4	11	9	1	11	5	57
1998 to 99	8	7	9	3	-4	1	13	0	37
1999 to 00	-12	-4	4	3	5	4	2	4	6
2000 to 01	28	11	6	21	13	6	-12	3	76
2001 to 02	-8	-19	-23	-6	-5	-1	-16	6	-72
2002 to 03	5	-1	14	7	17	1	17	1	61
2003 to 04	13	1	-11	16	4	-11	10	-9	13
2004 to 05	-5	1	29	-3	-11	-1	-3	-30	-23
2005 to 06	5	-1	-4	-15	-11	-16	10	-20	-52
2006 to 07	21	-7	1	3	3	-17	3	2	9
2007 to 08	0	-15	3	7	6	-6	-4	-12	-21
2008 to 09	10	7	20	2	-3	7	-6	-5	32
2009 to 10	-9	4	10	7	7	-9	6	-8	8
2010 to 11	17	-9	4	16	-5	-7	-4	-16	-4
2011 to 12	32	8	-4	-5	-3	0	5	-6	27
2012 to 13	-12	-14	-13	-6	-5	-21	3	0	-68
2013 to 14	12	11	5	-10	0	-3	7	-17	5
2014 to 15	-5	-19	-8	-10	-6	2	-6	4	-48
2015 to 16	-14	0	12	1	11	0	-7	0	3
2016 to 17	-4	-1	8	-16	-4	-13	7	2	-21
2017 to 18	-9	7	-3	2	-5	-19	-9	-15	-51
2018 to 19	-16	1	4	-10	0	-11	-4	-3	-39
2019 to 20	-16	2	-6	-18	10	-8	-5	-3	-44
2020 to 21	-3	5	-4	-9	-9	-6	-7	-13	-46

District 105
Enrollment History

School Year	K	1	2	3	4	5	6	7	8	K-8	Sp. Ed.	Total
1985-86	95	111	103	94	95	87	97	90	112	884	37	921
1986-87	110	98	103	101	92	94	97	94	92	881	29	910
1987-88	97	104	85	94	97	92	95	89	92	845	34	879
1988-89	100	96	98	81	89	95	87	95	93	834	47	881
1989-90	111	96	96	95	89	87	92	88	96	850	44	894
1990-91	100	115	88	91	93	83	82	85	84	821	45	866
1991-92	115	106	117	83	90	97	88	87	94	877	39	916
1992-93	108	121	102	117	77	96	99	98	99	917	28	945
1993-94	111	107	122	101	113	73	100	103	93	923	25	948
1994-95	117	119	112	117	116	117	74	107	95	974	38	1,012
1995-96	129	122	109	116	122	104	119	82	110	1,013	22	1,035
1996-97	117	130	95	92	106	116	111	119	82	968	8	976
1997-98	126	114	108	88	91	108	111	104	125	975	19	994
1998-99	107	135	114	120	94	102	112	116	118	1,018	19	1,037
1999-00	104	114	130	119	118	95	109	116	115	1,020	22	1,042
2000-01	103	121	109	128	121	113	95	105	112	1,007	19	1,026
2001-02	118	112	125	106	117	119	122	97	112	1,028	20	1,048
2002-03	119	132	110	115	109	121	118	129	109	1,062	24	1,086
2003-04	106	120	122	114	117	116	118	120	128	1,061	19	1,080
2004-05	109	114	119	128	119	118	116	131	120	1,074	23	1,097
2005-06	119	118	119	125	127	121	113	121	123	1,086	19	1,105
2006-07	143	129	124	119	133	138	117	128	122	1,153	0	1,153
2007-08	128	147	132	129	127	137	145	124	134	1,203	0	1,203
2008-09	150	143	148	135	136	143	133	147	136	1,271	0	1,271
2009-10	134	152	127	142	124	122	127	132	139	1,199	40	1,239
2010-11	125	143	153	141	148	132	131	133	139	1,245	—	1,245
2011-12	123	145	147	149	146	151	135	138	139	1,273	—	1,273
2012-13	156	132	151	152	159	150	151	139	136	1,326	—	1,326
2013-14	135	165	132	152	159	160	154	153	142	1,352	—	1,352
2014-15	122	144	163	145	155	161	153	157	161	1,361	—	1,361
2015-16	141	137	153	154	156	152	156	156	153	1,358	—	1,358
2016-17	115	154	134	152	151	156	146	163	160	1,331	—	1,331
2017-18	133	120	140	128	151	146	155	146	169	1,288	—	1,288
2018-19	122	139	125	138	138	148	155	163	142	1,270	—	1,270
2019-20	120	118	133	125	136	141	158	159	166	1,256	—	1,256
2020-21	114	125	123	136	132	131	144	169	166	1,240	—	1,240
2021-22	104	110	126	127	125	138	135	148	159	1,172	—	1,172

District 105

Decomposition of Annual Sources of Enrollment Change

Transition Year Sept. to Sept.	Change Total Enrollment	Entering K vs Exiting 8	Net Student Migration/ Transfer	Change Sp. Ed.
1985 to 86	-11	-2	-1	-8
1986 to 87	-31	5	-41	5
1987 to 88	2	8	-19	13
1988 to 89	13	18	-2	-3
1989 to 90	-28	4	-33	1
1990 to 91	50	31	25	-6
1991 to 92	29	14	26	-11
1992 to 93	3	12	-6	-3
1993 to 94	64	24	27	13
1994 to 95	23	34	5	-16
1995 to 96	-59	7	-52	-14
1996 to 97	18	44	-37	11
1997 to 98	43	-18	61	0
1998 to 99	5	-14	16	3
1999 to 00	-16	-12	-1	-3
2000 to 01	22	6	15	1
2001 to 02	38	7	27	4
2002 to 03	-6	-3	2	-5
2003 to 04	17	-19	32	4
2004 to 05	8	-1	13	-4
2005 to 06	48	20	47	-19
2006 to 07	50	6	44	0
2007 to 08	68	16	52	0
2008 to 09	-32	-2	-70	40
2009 to 10	6	-14	60	-40
2010 to 11	28	-16	44	0
2011 to 12	53	17	36	0
2012 to 13	26	-1	27	0
2013 to 14	9	-20	29	0
2014 to 15	-3	-20	17	0
2015 to 16	-27	-38	11	0
2016 to 17	-43	-27	-16	0
2017 to 18	-18	-47	29	0
2018 to 19	-14	-22	8	0
2019 to 20	-16	-52	36	0
2020 to 21	-68	-62	-6	0

District 105

Net Annual Student Migration/Transfer

Transition Year Sept. to Sept.	Grade Transition								Total
	K-1	1-2	2-3	3-4	4-5	5-6	6-7	7-8	
1985 to 86	3	-8	-2	-2	-1	10	-3	2	-1
1986 to 87	-6	-13	-9	-4	0	1	-8	-2	-41
1987 to 88	-1	-6	-4	-5	-2	-5	0	4	-19
1988 to 89	-4	0	-3	8	-2	-3	1	1	-2
1989 to 90	4	-8	-5	-2	-6	-5	-7	-4	-33
1990 to 91	6	2	-5	-1	4	5	5	9	25
1991 to 92	6	-4	0	-6	6	2	10	12	26
1992 to 93	-1	1	-1	-4	-4	4	4	-5	-6
1993 to 94	8	5	-5	15	4	1	7	-8	27
1994 to 95	5	-10	4	5	-12	2	8	3	5
1995 to 96	1	-27	-17	-10	-6	7	0	0	-52
1996 to 97	-3	-22	-7	-1	2	-5	-7	6	-37
1997 to 98	9	0	12	6	11	4	5	14	61
1998 to 99	7	-5	5	-2	1	7	4	-1	16
1999 to 00	17	-5	-2	2	-5	0	-4	-4	-1
2000 to 01	9	4	-3	-11	-2	9	2	7	15
2001 to 02	14	-2	-10	3	4	-1	7	12	27
2002 to 03	1	-10	4	2	7	-3	2	-1	2
2003 to 04	8	-1	6	5	1	0	13	0	32
2004 to 05	9	5	6	-1	2	-5	5	-8	13
2005 to 06	10	6	0	8	11	-4	15	1	47
2006 to 07	4	3	5	8	4	7	7	6	44
2007 to 08	15	1	3	7	16	-4	2	12	52
2008 to 09	2	-16	-6	-11	-14	-16	-1	-8	-70
2009 to 10	9	1	14	6	8	9	6	7	60
2010 to 11	20	4	-4	5	3	3	7	6	44
2011 to 12	9	6	5	10	4	0	4	-2	36
2012 to 13	9	0	1	7	1	4	2	3	27
2013 to 14	9	-2	13	3	2	-7	3	8	29
2014 to 15	15	9	-9	11	-3	-5	3	-4	17
2015 to 16	13	-3	-1	-3	0	-6	7	4	11
2016 to 17	5	-14	-6	-1	-5	-1	0	6	-16
2017 to 18	6	5	-2	10	-3	9	8	-4	29
2018 to 19	-4	-6	0	-2	3	10	4	3	8
2019 to 20	5	5	3	7	-5	3	11	7	36
2020 to 21	-4	1	4	-11	6	4	4	-10	-6

District 106
Enrollment History

School Year	K	1	2	3	4	5	6	7	8	K-8	Sp. Ed.	Total
1985-86	67	67	51	64	54	60	65	65	78	571	—	571
1986-87	66	70	65	57	66	54	63	71	68	580	—	580
1987-88	80	77	68	67	56	64	56	59	74	601	—	601
1988-89	78	86	74	77	72	60	70	61	62	640	—	640
1989-90	76	83	89	77	84	72	63	70	60	674	—	674
1990-91	75	76	82	89	79	85	78	62	66	692	—	692
1991-92	79	88	78	86	88	86	88	84	64	741	—	741
1992-93	93	88	91	87	89	91	92	84	80	795	—	795
1993-94	78	98	81	89	89	92	89	90	89	795	—	795
1994-95	84	86	101	86	94	90	93	92	88	814	—	814
1995-96	94	89	82	99	86	91	92	97	91	821	—	821
1996-97	79	100	93	89	101	87	94	89	97	829	—	829
1997-98	84	86	101	95	99	103	89	97	89	843	—	843
1998-99	74	92	88	101	94	106	109	92	100	856	—	856
1999-00	82	79	98	91	107	93	105	111	93	859	—	859
2000-01	94	84	82	100	95	111	99	109	110	884	—	884
2001-02	70	92	90	83	100	97	114	103	106	855	—	855
2002-03	95	80	98	99	89	102	104	116	98	881	—	881
2003-04	73	103	86	97	101	93	106	104	114	877	—	877
2004-05	78	88	105	92	102	102	96	108	107	878	—	878
2005-06	70	86	87	104	94	102	109	97	109	858	—	858
2006-07	87	81	90	95	108	92	110	110	101	874	—	874
2007-08	65	98	87	98	101	111	102	115	110	887	—	887
2008-09	77	79	101	89	103	101	115	102	120	887	—	887
2009-10	77	87	81	108	91	110	105	124	104	887	—	887
2010-11	69	80	95	83	111	92	107	104	123	864	—	864
2011-12	65	78	85	94	83	113	98	113	108	837	—	837
2012-13	73	69	83	96	101	86	117	100	117	842	—	842
2013-14	79	80	70	87	104	107	83	120	103	833	—	833
2014-15	77	88	79	76	86	105	106	86	119	822	—	822
2015-16	77	89	90	87	79	93	100	105	85	805	—	805
2016-17	96	86	85	91	86	86	96	110	110	846	—	846
2017-18	87	104	88	91	94	88	91	105	112	860	—	860
2018-19	92	93	113	94	91	92	85	97	104	861	—	861
2019-20	91	99	93	119	101	101	97	92	98	891	—	891
2020-21	95	92	94	96	113	98	99	103	90	880	—	880
2021-22	110	110	98	98	102	117	106	104	105	950	—	950

District 106

Decomposition of Annual Sources of Enrollment Change

Transition Year Sept. to Sept.	Change Total Enrollment	Entering K vs Exiting 8	Net Student Migration/ Transfer	Change Sp. Ed.
1985 to 86	9	-12	21	0
1986 to 87	21	12	9	0
1987 to 88	39	4	35	0
1988 to 89	34	14	20	0
1989 to 90	18	15	3	0
1990 to 91	49	13	36	0
1991 to 92	54	29	25	0
1992 to 93	0	-2	2	0
1993 to 94	19	-5	24	0
1994 to 95	7	6	1	0
1995 to 96	8	-12	20	0
1996 to 97	14	-13	27	0
1997 to 98	13	-15	28	0
1998 to 99	3	-18	21	0
1999 to 00	25	1	24	0
2000 to 01	-29	-40	11	0
2001 to 02	26	-11	37	0
2002 to 03	-4	-25	21	0
2003 to 04	1	-36	37	0
2004 to 05	-20	-37	17	0
2005 to 06	16	-22	38	0
2006 to 07	13	-36	49	0
2007 to 08	0	-33	33	0
2008 to 09	0	-43	43	0
2009 to 10	-23	-35	12	0
2010 to 11	-27	-58	31	0
2011 to 12	5	-35	40	0
2012 to 13	-9	-38	29	0
2013 to 14	-11	-26	15	0
2014 to 15	-17	-42	25	0
2015 to 16	41	11	30	0
2016 to 17	14	-23	37	0
2017 to 18	1	-20	21	0
2018 to 19	30	-13	43	0
2019 to 20	-11	-3	-8	0
2020 to 21	70	20	50	0

District 106

Net Annual Student Migration/Transfer

Transition Year Sept. to Sept.	Grade Transition								
	K-1	1-2	2-3	3-4	4-5	5-6	6-7	7-8	Total
1985 to 86	3	-2	6	2	0	3	6	3	21
1986 to 87	11	-2	2	-1	-2	2	-4	3	9
1987 to 88	6	-3	9	5	4	6	5	3	35
1988 to 89	5	3	3	7	0	3	0	-1	20
1989 to 90	0	-1	0	2	1	6	-1	-4	3
1990 to 91	13	2	4	-1	7	3	6	2	36
1991 to 92	9	3	9	3	3	6	-4	-4	25
1992 to 93	5	-7	-2	2	3	-2	-2	5	2
1993 to 94	8	3	5	5	1	1	3	-2	24
1994 to 95	5	-4	-2	0	-3	2	4	-1	1
1995 to 96	6	4	7	2	1	3	-3	0	20
1996 to 97	7	1	2	10	2	2	3	0	27
1997 to 98	8	2	0	-1	7	6	3	3	28
1998 to 99	5	6	3	6	-1	-1	2	1	21
1999 to 00	2	3	2	4	4	6	4	-1	24
2000 to 01	-2	6	1	0	2	3	4	-3	11
2001 to 02	10	6	9	6	2	7	2	-5	37
2002 to 03	8	6	-1	2	4	4	0	-2	21
2003 to 04	15	2	6	5	1	3	2	3	37
2004 to 05	8	-1	-1	2	0	7	1	1	17
2005 to 06	11	4	8	4	-2	8	1	4	38
2006 to 07	11	6	8	6	3	10	5	0	49
2007 to 08	14	3	2	5	0	4	0	5	33
2008 to 09	10	2	7	2	7	4	9	2	43
2009 to 10	3	8	2	3	1	-3	-1	-1	12
2010 to 11	9	5	-1	0	2	6	6	4	31
2011 to 12	4	5	11	7	3	4	2	4	40
2012 to 13	7	1	4	8	6	-3	3	3	29
2013 to 14	9	-1	6	-1	1	-1	3	-1	15
2014 to 15	12	2	8	3	7	-5	-1	-1	25
2015 to 16	9	-4	1	-1	7	3	10	5	30
2016 to 17	8	2	6	3	2	5	9	2	37
2017 to 18	6	9	6	0	-2	-3	6	-1	21
2018 to 19	7	0	6	7	10	5	7	1	43
2019 to 20	1	-5	3	-6	-3	-2	6	-2	-8
2020 to 21	15	6	4	6	4	8	5	2	50

District 107
Enrollment History

School Year	K	1	2	3	4	5	6	7	8	K-8	Sp. Ed.	Total
1985-86	58	45	48	53	40	44	52	52	62	454	30	484
1986-87	50	63	43	50	55	43	50	53	52	459	22	481
1987-88	54	47	71	53	52	56	48	56	55	492	22	514
1988-89	58	47	51	70	55	47	57	49	59	493	26	519
1989-90	39	52	46	54	75	60	48	63	51	488	—	488
1990-91	56	40	60	54	56	75	63	65	78	547	—	547
1991-92	52	58	41	64	64	54	80	64	57	534	—	534
1992-93	56	55	58	44	67	72	60	82	60	554	—	554
1993-94	65	66	57	58	49	67	71	64	82	579	—	579
1994-95	66	64	67	65	62	51	68	70	69	582	—	582
1995-96	57	76	67	75	59	63	54	70	70	591	—	591
1996-97	73	65	77	74	83	61	62	59	69	623	—	623
1997-98	76	77	70	83	75	85	65	65	58	654	—	654
1998-99	61	72	78	67	86	79	89	71	61	664	—	664
1999-00	50	67	76	85	68	89	81	91	75	682	—	682
2000-01	75	53	69	85	83	69	92	86	90	702	—	702
2001-02	63	83	55	77	83	93	77	93	90	714	—	714
2002-03	79	73	88	56	84	84	97	76	98	735	—	735
2003-04	66	88	78	90	62	88	88	94	69	723	—	723
2004-05	76	76	87	81	87	63	92	91	101	754	—	754
2005-06	86	77	80	90	79	96	71	94	91	764	—	764
2006-07	76	85	85	79	91	78	97	66	93	750	—	750
2007-08	71	81	92	84	80	97	81	100	66	752	—	752
2008-09	62	88	77	91	77	77	98	77	99	746	—	746
2009-10	91	69	89	74	97	77	80	99	82	758	—	758
2010-11	83	95	71	87	77	87	82	79	100	761	—	761
2011-12	61	77	96	76	89	80	84	86	81	730	—	730
2012-13	72	72	79	93	77	90	82	86	84	735	—	735
2013-14	68	82	78	83	98	79	92	85	84	749	—	749
2014-15	62	83	84	83	84	102	81	94	88	761	—	761
2015-16	66	68	86	91	84	91	110	88	97	781	—	781
2016-17	77	67	71	91	94	89	96	114	86	785	—	785
2017-18	66	80	69	70	94	98	87	94	113	771	—	771
2018-19	90	67	84	74	74	93	106	90	99	777	—	777
2019-20	74	93	67	92	80	78	96	107	94	781	—	781
2020-21	81	80	90	69	99	84	80	98	113	794	—	794
2021-22	78	88	81	92	73	98	87	76	100	773	—	773

District 107

Decomposition of Annual Sources of Enrollment Change

Transition Year Sept. to Sept.	Change Total Enrollment	Entering K vs Exiting 8	Net Student Migration/ Transfer	Change Sp. Ed.
1985 to 86	-3	-12	17	-8
1986 to 87	33	2	31	0
1987 to 88	5	3	-2	4
1988 to 89	-31	-20	15	-26
1989 to 90	59	5	54	0
1990 to 91	-13	-26	13	0
1991 to 92	20	-1	21	0
1992 to 93	25	5	20	0
1993 to 94	3	-16	19	0
1994 to 95	9	-12	21	0
1995 to 96	32	3	29	0
1996 to 97	31	7	24	0
1997 to 98	10	3	7	0
1998 to 99	18	-11	29	0
1999 to 00	20	0	20	0
2000 to 01	12	-27	39	0
2001 to 02	21	-11	32	0
2002 to 03	-12	-32	20	0
2003 to 04	31	7	24	0
2004 to 05	10	-15	25	0
2005 to 06	-14	-15	1	0
2006 to 07	2	-22	24	0
2007 to 08	-6	-4	-2	0
2008 to 09	12	-8	20	0
2009 to 10	3	1	2	0
2010 to 11	-31	-39	8	0
2011 to 12	5	-9	14	0
2012 to 13	14	-16	30	0
2013 to 14	12	-22	34	0
2014 to 15	20	-22	42	0
2015 to 16	4	-20	24	0
2016 to 17	-14	-20	6	0
2017 to 18	6	-23	29	0
2018 to 19	4	-25	29	0
2019 to 20	13	-13	26	0
2020 to 21	-21	-35	14	0

District 107

Net Annual Student Migration/Transfer

Transition Year Sept. to Sept.	Grade Transition								
	K-1	1-2	2-3	3-4	4-5	5-6	6-7	7-8	Total
1985 to 86	5	-2	2	2	3	6	1	0	17
1986 to 87	-3	8	10	2	1	5	6	2	31
1987 to 88	-7	4	-1	2	-5	1	1	3	-2
1988 to 89	-6	-1	3	5	5	1	6	2	15
1989 to 90	1	8	8	2	0	3	17	15	54
1990 to 91	2	1	4	10	-2	5	1	-8	13
1991 to 92	3	0	3	3	8	6	2	-4	21
1992 to 93	10	2	0	5	0	-1	4	0	20
1993 to 94	-1	1	8	4	2	1	-1	5	19
1994 to 95	10	3	8	-6	1	3	2	0	21
1995 to 96	8	1	7	8	2	-1	5	-1	29
1996 to 97	4	5	6	1	2	4	3	-1	24
1997 to 98	-4	1	-3	3	4	4	6	-4	7
1998 to 99	6	4	7	1	3	2	2	4	29
1999 to 00	3	2	9	-2	1	3	5	-1	20
2000 to 01	8	2	8	-2	10	8	1	4	39
2001 to 02	10	5	1	7	1	4	-1	5	32
2002 to 03	9	5	2	6	4	4	-3	-7	20
2003 to 04	10	-1	3	-3	1	4	3	7	24
2004 to 05	1	4	3	-2	9	8	2	0	25
2005 to 06	-1	8	-1	1	-1	1	-5	-1	1
2006 to 07	5	7	-1	1	6	3	3	0	24
2007 to 08	17	-4	-1	-7	-3	1	-4	-1	-2
2008 to 09	7	1	-3	6	0	3	1	5	20
2009 to 10	4	2	-2	3	-10	5	-1	1	2
2010 to 11	-6	1	5	2	3	-3	4	2	8
2011 to 12	11	2	-3	1	1	2	2	-2	14
2012 to 13	10	6	4	5	2	2	3	-2	30
2013 to 14	15	2	5	1	4	2	2	3	34
2014 to 15	6	3	7	1	7	8	7	3	42
2015 to 16	1	3	5	3	5	5	4	-2	24
2016 to 17	3	2	-1	3	4	-2	-2	-1	6
2017 to 18	1	4	5	4	-1	8	3	5	29
2018 to 19	3	0	8	6	4	3	1	4	29
2019 to 20	6	-3	2	7	4	2	2	6	26
2020 to 21	7	1	2	4	-1	3	-4	2	14